



WORLD TRADE ORGANIZATION  
ORGANISATION MONDIALE DU COMMERCE  
ORGANIZACIÓN MUNDIAL DEL COMERCIO

## REPORT OF THE JURY WTO PROJECT COMPETITION FOR THE EXTENSION OF THE CENTRE WILLIAM RAPPARD



One-stage competition  
January 2009





WORLD TRADE ORGANIZATION  
ORGANISATION MONDIALE DU COMMERCE  
ORGANIZACIÓN MUNDIAL DEL COMERCIO

## REPORT OF THE JURY WTO PROJECT COMPETITION FOR THE EXTENSION OF THE CENTRE WILLIAM RAPPARD



One-stage competition  
January 2009





# TABLE OF CONTENTS

1_PREAMBLE BY THE COMMISSIONING ORGANIZATION	6-8
2_ORGANIZER	8
3_TYPE OF COMPETITION AND PROCEDURE	9
4_LEGAL BASES	9
5_PURPOSE OF THE COMPETITION	9
6_OBJECTIVES OF THE COMMISSIONING ORGANIZATION	10
7_SUSTAINABLE DEVELOPMENT CONCEPT	11
8_INTENTIONS OF THE COMMISSIONING ORGANIZATION	11
9_TIMETABLE OF THE COMPETITION	12
10_ASSESSMENT CRITERIA	12
11_COMPOSITION OF THE JURY	13
12_PROJECTS RECEIVED	15-30
13_PRELIMINARY CHECKS	31
14_DELIBERATIONS	31-34
15_RECOMMENDATIONS OF THE JURY	35
16_LIFTING OF ANONYMITY	35-82
17_APPROVAL BY THE JURY	84

## General introduction

The World Trade Organization – WTO – is an international organization whose purpose is to open trade for the benefit of all. We provide the forum for negotiating agreements aimed at reducing obstacles to trade, ensuring a level playing field in international trade, thus contributing to development. We also provide a framework for the implementation and monitoring of these agreements, as well as for settling disputes arising from their application.

Over the past 60 years, the GATT and its successor the WTO, which was established in 1995, have helped to create a strong and prosperous international trading system, contributing to unprecedented growth.

The WTO currently has 153 Members, of which 117 are developing countries. Its activities are supported by a Secretariat of some 850 staff, led by the WTO Director-General. The Secretariat is located in Geneva, Switzerland, and has a budget of approximately CHF 200 million (\$165 million, €125 million). The three official languages of the WTO are English, French and Spanish.

Decisions in the Organization are generally taken by consensus. The higher institutional forum is the Ministerial Conference, which meets roughly every two years. A General Council conducts the business of the Organization in the intervals between Ministerial Conferences. Both of these bodies comprise all Members. Specialized subsidiary bodies (Councils, Committees), also comprising all Members, deal with the administration and the monitoring of the implementation of specific WTO Agreements.

Our main activities are:

- Negotiating the reduction of obstacles to trade (import tariffs, other barriers to trade) and agreeing on rules against discrimination in international trade;
- administering and monitoring the application of the agreed rules for trade in goods, services, intellectual property rights;
- surveying the trade policies of our Members, as well as ensuring transparency of regional and bilateral trade agreements;
- settling disputes among our Members about the correct interpretation and application of the agreements;
- building capacity of developing-country government officials in international trade matters;
- assisting the process of accession of some 30 countries which are not yet Members of the Organization.

Our founding principles are openness, non-discrimination and transparency. We believe that opening markets, with justifiable exceptions or with adequate flexibilities, is a necessary element to encourage sustainable development, raise people's welfare, reduce poverty, and foster peace and stability. We also believe that market opening must be accompanied by sound domestic and international policies that contribute to development according to each Member's needs and aspirations.

The WTO web site contains two introductory videos which explain how the Organization works.

Introductory videos:

[http://www.wto.org/english/res\\_e/webcas\\_e/webcas\\_e.htm#intro](http://www.wto.org/english/res_e/webcas_e/webcas_e.htm#intro)

“To the heart of the WTO”  
“A virtual tour of the WTO”

See also the brochure “Understanding the WTO”.

### **The WTO Secretariat**

The responsibility of the WTO Secretariat is to provide top-quality, independent support to WTO Member governments on all of the activities that are carried out by the Organization, and to serve the WTO with professionalism, impartiality and integrity. The Secretariat is a multicultural team of highly qualified individuals who possess the wide range of skills, knowledge and experience required to handle the Secretariat’s responsibilities and to work together as an efficient and diligent international civil service.

The WTO currently has its headquarters in Geneva, Switzerland, and employs approximately 850 staff members. It is located at the Centre William Rappard (CWR), rue de Lausanne. The headquarters premises house the Secretariat and its services as well as conference and meeting rooms.

Apart from the persons working in the CWR on a permanent basis, a considerable number of representatives of WTO Member countries use the available facilities every day for conferences, dispute settlement procedures, regular meetings of several dozen councils, committees, working groups, etc., informal meetings of various formats, and training courses. The number of people actually in the building at any given time often exceeds 2,000. Each year, the building receives some 50,000 visitors: delegates from WTO Member countries, trainees, academics, students, NGO representatives, etc.

To respond to the Organization’s development needs while avoiding a proliferation of annexes, the WTO has decided to concentrate all its activities on a single site by renovating and enlarging its current headquarters.

The meeting rooms, offices and common areas will all be renovated and upgraded to bring them into line with the activities of the Secretariat and Members.

One of the aims of this renovation work is to improve the utilization of space in the offices and common working areas. By using a more modular structure, many of the existing offices can be adapted to accommodate two or more staff members in better conditions.

At the same time, more open plan office space can be made available for certain functions. Thanks to these measures, the CWR’s capacity should increase from 650 to about 800 staff members.

The draft master plan provides for the renovation, enlargement and extension of the CWR building in the framework of a single project.

The project is to be carried out in three stages, the first two being the renovation and enlargement of the building within its existing footprint, and the

third being the construction of a new building on the south car park as an extension of the Centre William Rappard.

This architectural design competition for an extension of the CWR concerns the last of these stages.

The new building must provide the following:

- 300 workstations at least over a gross floor area of 11,000 to 13,000 square metres;
- an underground car park with 200 spaces;
- a security building at the entrance to the grounds for control and identification purposes.

The result will be a single-site headquarters capable of meeting the WTO's short- and long-term needs. The single site will comprise greatly expanded conference facilities and office space for 1,100 staff members, as well as ample infrastructure to provide WTO Members all essential services.

### **Organization and financing**

With the assistance of FIPOI, the WTO is organizing an architectural design competition for an on-site extension of the Centre William Rappard outside its current footprint.

The WTO will be responsible for the competition process and the implementation of the project. FIPOI will be advising and assisting the WTO, and will be in contact with the Swiss Confederation for matters relating to the financing of the project. The Swiss Confederation intends to provide the financing needed to build this extension, and will submit an application to the Swiss Federal Chambers for the required credit in the form of a loan.

The complete overall budget for the extramural extension is CHF 40 million excluding tax.

The cost of designing and building the security facility at the entrance and cost of the car park are not included in this budget, and will have to be financed separately. A total of CHF 10 million excluding tax is planned for the 200-space underground car park under the future building.

## **2 ORGANIZER**

The WTO is the organizer, and will work in cooperation with FIPOI, which will guide and assist the WTO, as the Commissioning Organization, in building an extramural extension of the Centre William Rappard.

Note:

The Property Foundation for International Organizations (FIPOI) is a private-law foundation established jointly by the Swiss Confederation and the Canton of Geneva in 1964. Under the terms of its Statutes, its purpose is to facilitate the provision of suitable premises for international organizations with headquarters in Geneva and the Canton of Vaud.



### 3 TYPE OF COMPETITION AND PROCEDURE

In line with the *procédures et formes d'attribution des mandats de prestations en architecture* (procedures for awarding contracts for architectural services) laid down by the Swiss Association of Engineers and Architects (SIA), the international architectural design competition will be an open procedure in one stage.

### 4 LEGAL BASES

Entry in this competition implies agreement by the Organizer, the Jury and the candidates to abide by the terms of the competition regulations, specifications and programme, and the replies given to entrants' queries.

Submission of an entry constitutes acceptance of the decisions of the Jury and the decision of the WTO, which shall be final.

No appeal shall be admitted.

None of the provisions of these Regulations shall be interpreted as in any way affecting the privileges and immunities of the WTO as set forth in Article VIII of the Marrakesh Agreement Establishing the World Trade Organization and the Headquarters Agreement between the WTO and the Swiss Confederation.

### 5 PURPOSE OF THE COMPETITION

The WTO is organizing this competition for the extension of the Centre William Rappard with a view to constructing a building that meets its growth needs and to regrouping, on a single site, the totality of its staff and its activities.

The WTO has its Geneva headquarters at the Centre William Rappard (CWR).

The building will undergo renovation involving major transformations that will alter neither the nature of the volumes nor the external facades. This project will be transmitted to the candidates. The extension is a continuation of this renovation, which represents the first major stage of the WTO's reorganization on its current site.

The existing building forms part of Geneva's heritage. Thanks to its exceptional lakeshore location, in a wooded park open to the public and much appreciated by the people of Geneva, it enjoys an exceptional status in the canton.

The extension of the CWR is a considerable challenge from the architectural and urban planning point of view, in that it must be adapted to the site, in harmony with the existing building, and functional for the user while at the same time respecting a location that is particularly dear to the population of Geneva.

The building was built in 1926 for the International Labour Organization following an architectural competition. It contains a number of important works of art and decorative elements on the theme of labour and the trades, as well as sculptures, paintings and other decorative or utilitarian objects which contribute to its distinctive character.

Wings were added to the building in 1937 and 1949, the east wing first and then the south wing.

Known as the Centre William Rappard (CWR) since 1977, the building has housed the WTO's headquarters since 1995. The WTO has set itself the objective of pursuing its development on this site, upgrading existing equipment both from a technical and a representative point of view, and building an extension to meet all of its needs.

Candidates must take account of the site and the existing building when preparing their projects, which must cover the following:

- An extension of the CWR with at least 300 workstations (gross area of 11,000 to 13,000 m<sup>2</sup>);
- an underground car park with 200 places.

The security building at the entrance to the grounds forms part of this project. It will not be judged by the Jury. The candidates' proposals will contribute to discussions on the design of this part of the project, which will be developed later on in cooperation with all of the services involved.

The WTO is aiming for a project which from the point of view of urban planning, architecture and functionality is well adapted to the site and incorporates current environmental solutions.

The candidates are expected to propose cost-efficient solutions with respect to operating and maintenance costs, and architectural and technical concepts that contribute to protecting the environment and respect sustainable development criteria.

In addition to construction cost reliability, the competition will also focus on the integration of the building into its surroundings, architectural expression, functionality and accessibility.

## 6 OBJECTIVES OF THE COMMISSIONING ORGANIZATION

The planned building will be an extension which, in addition to meeting the requirements of the programme and operational objectives, must blend gracefully into its surroundings.

Discussions are already under way with the canton regarding the legitimacy of a CWR extension in this beautifully wooded public park.

As this extension is a necessity, the objective of the Commissioning Organization is to ensure that it is exceptionally well integrated.

While simple imitation should be avoided, it is also essential that the projects should not clash with the existing structures. The extension must be in harmonious dialogue with the existing structure, to which it must be physically linked. It must reflect the WTO's transparency, pragmatism, flexibility, solidity and international character.

The WTO considers the quality of the project to be a decisive factor in achieving its own objectives.

For the Commissioning Organization, the building should be efficient in terms of office arrangements for its services, the library and restaurant being central elements in this respect. The extension will also house the documents reproduction unit.

Staffing requirements vary considerably from one division of the WTO to another. The new building must be able to adapt easily to the Organization's development over time. It is essential to ensure that spaces can

be assigned purposes other than those for which they were originally designed, and that they are modular.

Office space must be easily convertible, if need be, into open plan areas, individual offices, or a combination of the two, at reasonable investment and operating costs.

The actual building costs should be reasonable, as should be the annual operating costs.

The Commissioning Organization wishes the new building to be designed with particular attention to quality of life, architectural standards, and ecological concerns (energy and environment).

Having secured the approval of its decision-making bodies for the project study, the WTO would plan to move into the new extension by the end of 2012 at the latest.

## 7 SUSTAINABLE DEVELOPMENT CONCEPT

The WTO is determined to act in a spirit of sustainable development, and it is important that the architecture of the building and the landscaping of the portion of the park that the candidates are called up to transform should reflect that spirit.

The way the spaces relate to each other and the overall organization must promote contact, communication and human relations. The work spaces must be designed to ensure favourable working conditions for users. Volumes should be designed to provide as much organizational freedom and flexibility as possible.

The building's energy consumption should be very low, and maximum use should be made of energy sources available on-site (lake water (GLN project), solar, wind, vegetation, soil characteristics, energy resources).

## 8 INTENTIONS OF THE COMMISSIONING ORGANIZATION

The organization commissioning the work, the WTO, intends to commission the winner to conduct the study (mandat d'étude) for the execution of this project.

The assignment will involve developing the project with the Commissioning Organization and preparing both the building permit application and a precise and comprehensive overall estimate with a view to obtaining the required authorizations from the relevant bodies and authorities.

This assignment must be completed by June 2009 at the latest, a time-limit which is imperative in order to meet the Commissioning Organization's deadlines and objectives.

However, if for reasons of its own the Commissioning Organization decided not to continue with the specified project, the competitors, including the winner, would not be entitled to demand justification or compensation.

To ensure that the project develops in accordance with the WTO's objectives, both in terms of the quality of the building and compliance with execution deadlines and the budget, the Commissioning Organization reserves the right to add to the winner's team and establish a multi-disciplinary team, and to carry out the project as it sees fit in the light of the applicable constraints. The Commissioning Organization may also resort to this option in order to ensure compliance with Geneva's building practices and procedures.

## 9 TIMETABLE OF THE COMPETITION

The decision to build being subject to the granting of the loans by the Swiss Federal Chambers and the endorsement of the project by the WTO, any commission awarded shall be subject to those conditions and to the granting of the necessary building permits as well as the conclusion of a contract negotiated in good faith between the Commissioning Organization and the recipient of the commission.

- Opening of registration and publication: 1 September 2008
- Deadlines for queries: 7 October 2008
- Jury replies as of: 17 October 2008
- Handing over of the models to the candidates, as of: 7 October 2008
- End of registration: 24 October 2008
- Submission of projects: 19 December 2008
- Submission of models: 19 December 2008
- Decision: January 2009
- Exhibition of projects: February/March 2009

## 10 ASSESSMENT CRITERIA

The Jury's primary criteria will be the quality and coherence of the project in regard to the site and its conformity with the programme and objectives of the Commissioning Organization.

The proposals will be judged on the basis of the following criteria:

### 1. Urbanistic concept

Overall quality of project integration in the site.  
Volumetrics and accessibility.

### 2. Architectural concept

Architectural quality of the proposal, relationship between the different activities of the programme, quality of pathways/spaces.

### 3. Quality in terms of performance

Quality of the proposed organization, of interior and exterior flows, links with the existing building.  
Flexibility of use of facilities.

### 4. Quality of the project in economic and ecological terms

Integration of the construction concept, the energy concept, the materials and the economic aspects.  
Optimization of the sustainable development-related concept.

# 11 COMPOSITION OF THE JURY

<b>President:</b>		
Mr J. GARGES		Architect, Barcelona
<b>Members:</b>		
Mr R. YERXA	WTO	Deputy Director-General
Mr V. DO PRADO	WTO	Deputy Chief of Cabinet
Mr H. STIRØ	WTO	Chairman of the Budget Committee
Mr A. PEREZ	DFAE	Ambassador, Host Country Division, Permanent Mission of Switzerland
Mr M. MULLER	DCTI	Geneva City Councillor
Mr F. REINHARD	FIPOI	Director
Mrs T. GARCIA-GILL	WTO	Architect
Mrs I. CHAROLLAIS		Architect/ City of Geneva
Mrs O. DECQ		Architect
Mrs A. STAUFER		Architect
Mr M. BARANI		Architect
Mr J. BUGNA		Architect
Mr M. GRABER		Architect
<b>Alternates:</b>		
Mr R. LUTHER	WTO	Director, Administration and General Services
Mr E. AMHOF	DFAE	Chief, International Organizations and <i>Politique d'accueil</i>
Mr R. MAGNIN	FIPOI	Deputy Director
Mr A. MATHEZ	DCTI	Architect, DCTI Director
Mr F. DE MARIGNAC		Architect
Mr J.-P. STEFANI		Architect
<b>Experts:</b>		
Mr M. COUBES		Construction Economist
Mr T. JUNDT		Civil Engineer
Mr J. MOGLIA	DT	Architect, DT

*Note: The Chairman of the WTO Budget Committee has changed; the new Chairman, Mr Henning Stirø, replaces Mr Tony Lynch.*



## PROJECTS RECEIVED

197 Registered  
120 Sent in  
115 Accepted



# 12 PROJECTS RECEIVED

Candidates participating in the competition had to submit their proposals, projects and models by 19 December 2008.

197 candidates registered with the Organizer and received the competition programme and documents.

115 projects and their models were received within the specified deadline and in compliance with the Regulations.

1 project was received within the specified deadline but without a model.

4 projects were received after the deadline had expired.

## Projects received by the deadline and in accordance with the Regulations

N° 01\_LINEAR ONE



N° 02\_MEDIATION



N° 03\_1321059



N° 04\_VISSI D'ARTE



N° 05\_34860



N° 06\_udarmerm2





N° 07\_ESPEJ02008



N° 08\_YYZ2112



N° 09\_17171



N° 10\_36117778



N° 11\_1981977372349



N° 12\_LAKESIDE



N° 13\_1181530BOOH



N° 14\_WOTOTW



N° 15\_158075033



N° 16\_LES JARDINS



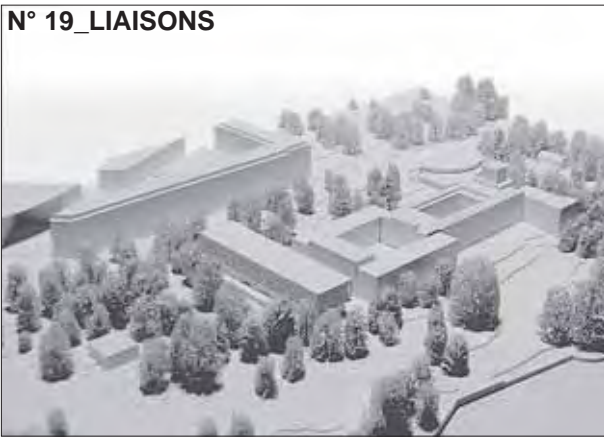
N° 17\_240346



N° 18\_378052



N° 19\_LIAISONS



N° 20\_OLOOL VOXPRESS



N° 21\_5T013



N° 22\_IITTALA



N° 23\_M77FS



N° 24\_1TRANSPARENT1



N° 25\_PAPILLON



N° 26\_0034678716



N° 27\_BDESLDG4613



N° 28\_QOOHL



N° 29\_WTOFADERSBLDG



N° 30\_210208



N° 31\_CŒUR VERTICAL



N° 32\_evrage45sig



N° 33\_E2R3M58P4F7E



N° 34\_ADT06



N° 35\_4574132216



N° 36\_AGORA



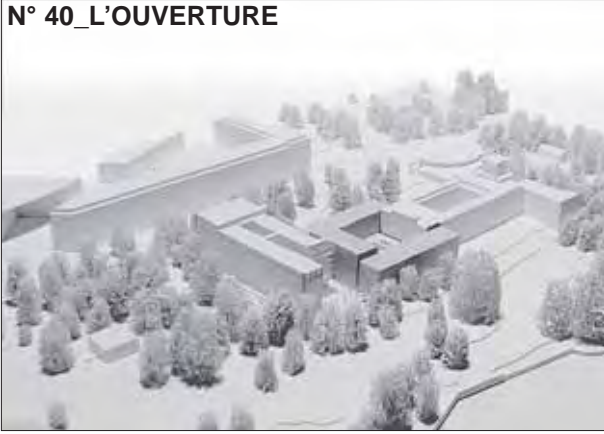
N° 37\_0398240813



N° 38\_20051



N° 40\_L'OUVERTURE



N° 41\_TRANSPARENCE



N° 42\_HALAINE



N° 43\_190901140105



N° 44\_PARKPAVILLIONS



N° 45\_QMXYZ888



N° 46\_001173



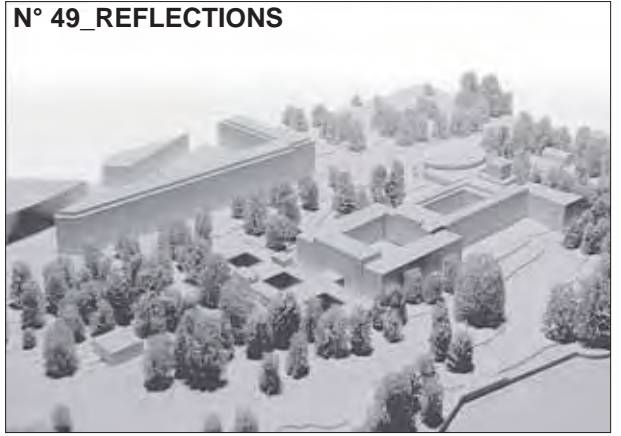
N° 47\_210680



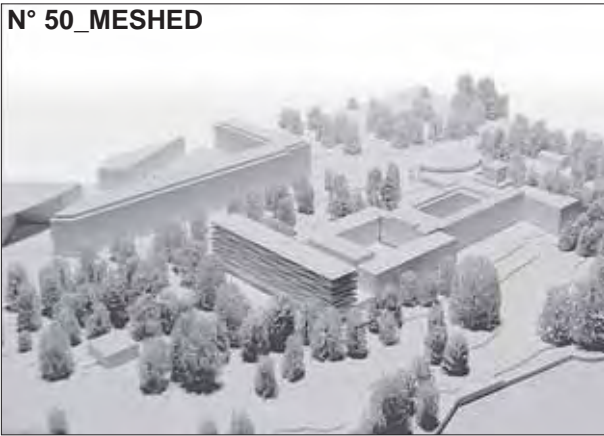
N° 48\_RS401635



N° 49\_REFLECTIONS



N° 50\_MESHED



N° 52\_CHCHC



N° 53\_00BKMC AHLCLP8



N° 54\_808080808



N° 55\_DASLDIF



N° 56\_DIAPHANE



N° 57\_EDELWEISS



N° 58\_1427A



N° 59\_l'effet naturel



N° 60\_FLAGSHIP



N° 61\_6253272448328



N° 62\_007007



N° 63\_9780500514252



N° 64\_PANIERPIANO



N° 65\_ACFGR300



N° 66\_650972



N° 67\_314517238917



N° 68\_400-820515-26



N° 69\_M18861969



N° 70\_47101010



N° 71\_CUBES6



N° 72\_MIROIRFENETRE





**N° 73\_EQUITABLE**



**N° 74\_GV130606**



**N° 75\_VENTANA**



**N° 76\_PARKWING**



**N° 77\_LIGHT**



**N° 78\_MIS EN PLACE**



**N° 79\_B01D12L11R034**



**N° 80\_SEKITEI**



N° 81\_252715



N° 82\_E 770 05



N° 83\_BALANCE



N° 84\_181625



N° 85\_JLXVXPSEVMDSJ



N° 86\_ECORCE



N° 87\_FOURSEASONS



N° 88\_IN BETWEEN



N° 89\_3ROCKS5518



N° 90\_13B30F24L06AN



N° 91\_AWISBEVFI



N° 92\_ABCDEFGHIJKLM



N° 93\_220582060182



N° 94\_SENCILLEZ



N° 95\_FRAMEWORK



N° 96\_271220



**N° 97\_THREE YARDS**



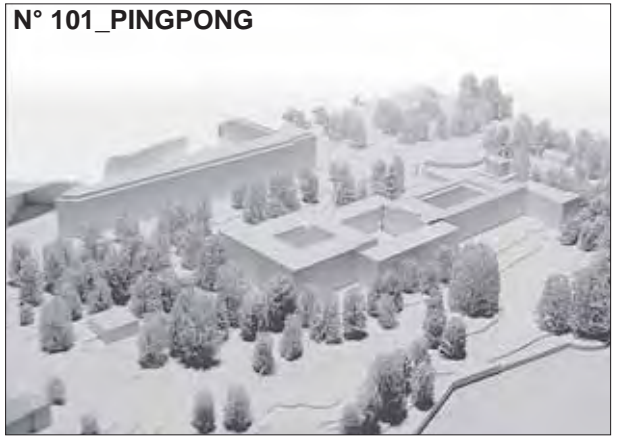
**N° 98\_TLJSOP**



**N° 99\_639748**



**N° 101\_PINGPONG**



**N° 103\_063YR25E638**



**N° 104\_VERT DE LAC**



**N° 105\_DIAMANT IF D 273ct**



**N° 106\_CEDRUS**



N° 107\_CORPUS169



N° 108\_LEPHAREDULAC



N° 109\_SAMARE



N° 110\_UNITE



N° 113\_...WING



N° 115\_AL711



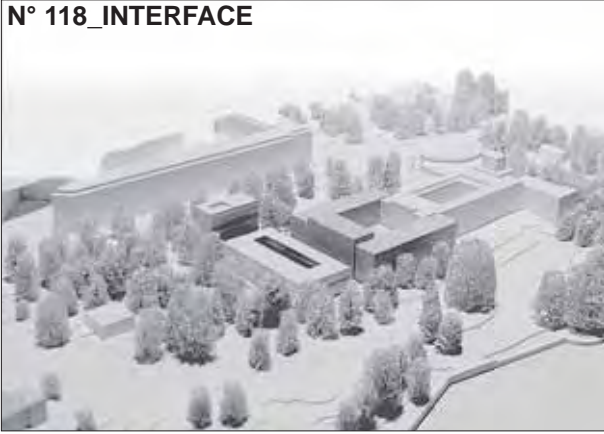
N° 116\_CONTINUITE



N° 117\_PUISSANCE 4



**N° 118\_INTERFACE**



**N° 119\_CONTINUITE (B)**



**N° 120\_DKRPL**



**N° 121\_97530**



**N° 122\_COUR OUVERTE**



## 13 PRELIMINARY CHECKS

Compliance checks were carried out by the experts between 9 and 19 January 2009. These checks were concerned exclusively with the elements relating to the programme and its specifications and provisions and with the observance of the competition perimeter.

It was noted that, in general, the competitors had complied with the programme conditions.

One of the features of these analyses was the wide range of gross areas proposed by competitors to meet the requirements of the programme. Many competitors were very generous in this respect which resulted in many spacious large-volume projects.

## 14 DELIBERATIONS

The full jury met on 20, 21 and 22 January 2009.

As Mr Tony Lynch, member of the WTO and Chairman of the Budget Committee, had left the WTO, he was replaced on the jury by the newly elected Chairman of the Budget Committee, Mr Henning Stirø.

The jury would like to recall the main objectives of the competition and is particularly anxious to stress the complexity of the problems posed by this site.

In addition to meeting the precise requirements of the programme, competitors had to avoid both a solution that merely imitates the existing structure and one that conflicts with it. The extension, which must be physically linked to the existing structure, had to engage in harmonious dialogue with it and the wooded site. It had simultaneously to express the WTO's transparency, pragmatism, flexibility, solidity and international character.

### **Projects excluded from assessment**

After having noted the receipt of the projects, the jury unanimously decided not to assess those projects which had not been received within the specified deadline, in conformity with the Regulations.

The jury excluded the following four projects:

No. 123\_200819  
No. 124\_SBH1208  
No. 125\_SMRZGK1208  
No. 126\_SOLOID

The jury unanimously excluded from assessment the project received within the deadline but not accompanied by a model, in accordance with the Regulations.

The jury accordingly excluded the following project:

No. 102\_02118-8003

The other 115 projects were accepted for assessment.

Following the submission of all the projects and the analysis of compliance with the programme requirements and the competition perimeter, the jury decided, before deliberating, to revisit the site.

It noted the efforts made by the competitors to overcome the challenges of the competition and the general interest of the proposals submitted.

## First round

The jury adopted a critical approach to each project based on the assessment criteria.

- Overall quality of project integration in the site, volumetrics and accessibility.
- Quality of the link to the existing structure.
- Architectural quality in relation to the various programme activities, flexibility and use of facilities.
- Functional quality and quality of organization of the various activities and internal flows.
- Ecological and economic quality of the project.

The jury decided to determine, on the basis of the stated assessment criteria, which projects only partially fulfilled one or other of these criteria.

The jury discussed and deliberated on each project, in the presence of the competitor's model incorporated into the general model, noting its strengths and weaknesses.

The projects eliminated for only partially fulfilling the criteria were those numbered and titled as follows:

No.001_LINEAR ONE	No.043_190901140105
No.002_MEDIATION	No.044_PARKPAVILLIONS
No.003_1321059	No.045_QMXYZ888
No.004_VISSI D'ARTE	No.046_001173
No.005_34860	No.047_210680
No.006_udarmerm2	No.048_ID:RS401635
No.008_YYZ2112	No.049_REFLECTIONS
No.009_17171	No.052_CHCHC
No.010_36117778	No.053_00BKMCAHLCLP8
No.011_1981977372349	No.054_808080808
No.012_LAKESIDE	No.055_DASLDIF
No.013_1181530BOOH	No.056_DIAPHANE
No.016_LES JARDINS	No.058_1427A
No.017_240346	No.059_l'effet naturel
No.018_378052	No.060_FLAGSHIP
No.020_OLOOL VOXPRESS	No.061_62532724483287
No.021_5T013	No.062_007007
No.024_1TRANSPARENT1	No.063_9780500514252
No.025_PAPILLON	No.064_PANIERPIANO
No.026_0034678716	No.065_ACFGR300
No.027_BDESLDG4613	No.066_650972
No.028_QOOHL	No.067_314517238917
No.030_210208	No.068_400-820515-26
No.031_CŒUR VERTICAL	No.069_M18861969
No.032_evragae45sig	No.073_EQUITABLE
No.033_E2R3M58P4F7E	No.075_VENTANA
No.034_ADT06	No.076_PARKWING
No.035_4574132216	No.077_LIGHT
No.036_AGORA	No.082_E 770 05
No.037_0398240813	No.083_BALANCE
No.038_20051	No.084_181625
No.040_L'OUVERTURE	No.085_JLXVXPSEVMDSJ
No.041_TRANSPARENCE	No.086_ECORCE
No.042_HALAINE	No.087_FOURSEASONS



No.088\_IN BETWEEN  
No.090\_13B30F24L06AN  
No.091\_AWISBEVFI  
No.093\_220582060182  
No.096\_271220  
No.097\_THREE YARDS  
No.098\_TLJSOP  
No.099\_639748  
No.104\_VERT DE LAC

No.105\_DIAMANT IF D 273ct  
No.110\_UNITE  
No.115\_AL711  
No.116\_CONTINUITE  
No.117\_PUISSANCE 4  
No.118\_INTERFACE  
No.119\_CONTINUITE (B)  
No.120\_DKRPL  
No.121\_97530

### **Second round**

The jury turned its attention to refining its assessment of the success achieved in satisfying each of the criteria.

It proceeded to carry out a detailed analysis taking into account, in particular, the following criteria:

- Integration in the site, analysis of the spaces generated.
- Quality of links and communications with the existing structure.
- Architectural quality generated for the activities.
- Functional quality, flows and flexibility.
- Ecological and economic quality, allowance for the gross area/useable area ratio.

The projects eliminated were those numbered and titled as follows:

No.015\_158075033  
No.029\_WTOFADERSBLDG  
No.071\_CUBES6  
No.074\_GV130606  
No.078\_MIS EN PLACE  
No.079\_B01D12L11R034  
No.089\_3ROCKS5518  
No.101\_PINGPONG  
No.103\_063YR25E638  
No.107\_CORPUS169  
No.108\_LEPHAREDULAC  
No.122\_COUR OUVERTE

### **Third round**

The jury proceeded to carry out a more detailed analysis of the remaining projects on the basis, in particular, of the following criteria:

- Integration in the site.
- Links to the existing structure.
- Architectural treatment.
- Quality of the interior spaces.
- Functionality, access, traffic flows.
- Ecological and economic quality.

The projects eliminated were those numbered and titled as follows:

No.007\_ESPEJ02008  
No.014\_WOTOTW  
No.022\_IITTALA  
No.072\_MIROIRFENETRE  
No.080\_SEKITEI  
No.092\_ABCDEFGHIJKLM

#### Fourth round

The jury proceeded to carry out a more detailed analysis of the remaining projects on the basis, in particular, of the following criteria:

- Integration in the site.
- Links to the existing structure.
- Architectural treatment.
- Quality of the interior spaces.
- Functionality, access, traffic flows, location of activities, flexibility.
- Ecological and economic quality.

The projects eliminated were those numbered and titled as follows:

No.019\_LIAISONS  
No.057\_EDELWEISS  
No.094\_SENCILLEZ  
No.109\_SAMARE  
No.113\_...WING

#### Second-chance round

Before confirming the final choice of projects for the awarding of prizes and mentions, the jury re-read all the projects and, after discussion, decided that the following should be given a second chance:

No.057\_EDELWEISS  
No.080\_SEKITEI

#### Ranking of projects

The jury proceeded to re-examine the projects selected for the awarding of prizes and mentions.

They were subjected to an in-depth critical review with reference to all the various criteria and then ranked by the members of the jury.

The jury unanimously awarded first place to the following project:

1st place            No.081\_252715

By a majority, the jury awarded the following placings:

2nd place            No.023\_M77FS  
3rd place            No.106\_CEDRUS  
4th place            No.057\_EDELWEISS  
5th place            No.095\_FRAMEWORK  
6th place            No.050\_MESHED  
7th place            No.070\_47101010  
Special mention    No.080\_SEKITEI

#### Award of prizes and mentions

The jury unanimously decided to distribute the prizes and mentions as follows:

1st place	1st prize	Project No.081_252715	CHF 60,000
2nd place	2nd prize	Project No.023_M77FS	CHF 45,000
3rd place	3rd prize	Project No.106_CEDRUS	CHF 35,000
4th place	4th prize	Project No.057_EDELWEISS	CHF 30,000
5th place	5th prize	Project No.095_FRAMEWORK	CHF 25,000
6th place	6th prize	Project No.050_MESHED	CHF 20,000
7th place	7th prize	Project No.070_47101010	CHF 15,000
Special mention		Project No.080_SEKITEI	CHF 40,000

## 15 RECOMMENDATIONS OF THE JURY

The jury thanks all the candidates for the quality of their work. It wishes to stress the difficulty of the competition due to the special nature of the site.

The extension of the existing structure poses a daunting architectural and urban planning challenge, since it has to meet the needs of both the user and the population of Geneva.

Its exceptional lakeshore location, in a wooded park, part of Geneva's heritage, gives it a very special status.

The jury is convinced that the project unanimously proposed is fully capable of being developed and of responding to its comments, with relevance and quality.

The jury unanimously recommends that the Commissioning Organization award the study for the execution of the project to the authors of the winning design No. 081\_252715.

The development of this perimeter is of great consequence for the WTO and the people of Geneva and it is essential that the authors of the project take carefully into account the requirements and objectives of the Commissioning Organization in preparing the first phase of development of the project, so that it very quickly becomes a reality.

If, following the assessment of the Competition, political or other difficulties were to arise in connection with the winning project, preventing, in particular, its realization, the jury makes no other recommendation to the Commissioning Organization.

## 16 LIFTING OF ANONYMITY

After ranking the projects and awarding prizes and mentions, the jury proceeded with the opening of the competitors' sealed envelopes and lifted anonymity in order of rank.



# LIFTING OF ANONYMITY

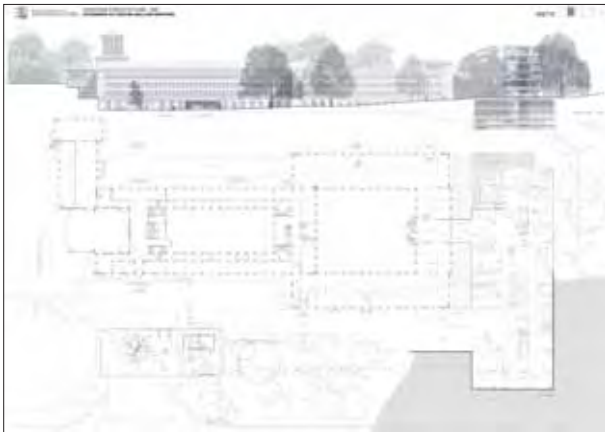




**Wittfoht Architekten**

**Staff:** Leonardo Sartori, Florian Kelsch, Thomas Kindsvater, Gerold Schrack  
Transsolar Energietechnik GmbH  
Wöhrl+Partner freie Landschaftsarchitekten BDA  
Bornscheuer Drexler Eisele Ingenieure GmbH  
Bobran Ingenieure

Wittfoht Architekten  
Reitzensteinstrasse 27  
70190 Stuttgart  
Germany



The project is integrated very cleverly into the site and very effectively adapted to its topography.

The longitudinal section of the project is very symptomatic of this desire to optimize the use of the site.

The exploitation of the rue de Lausanne level to create a very clear urban link between City and Park was keenly appreciated by the jury.

This level is treated as a large user-friendly platform, a promontory with a good view of the lake that shows off one of the WTO's important activities, the library space.

Its location on the site signals respect for the existing structure. The fact that a comfortable distance is left between the new and the old and the creation of a continuous and harmonious exterior and interior space reinforces this feeling of respect for the existing elements.

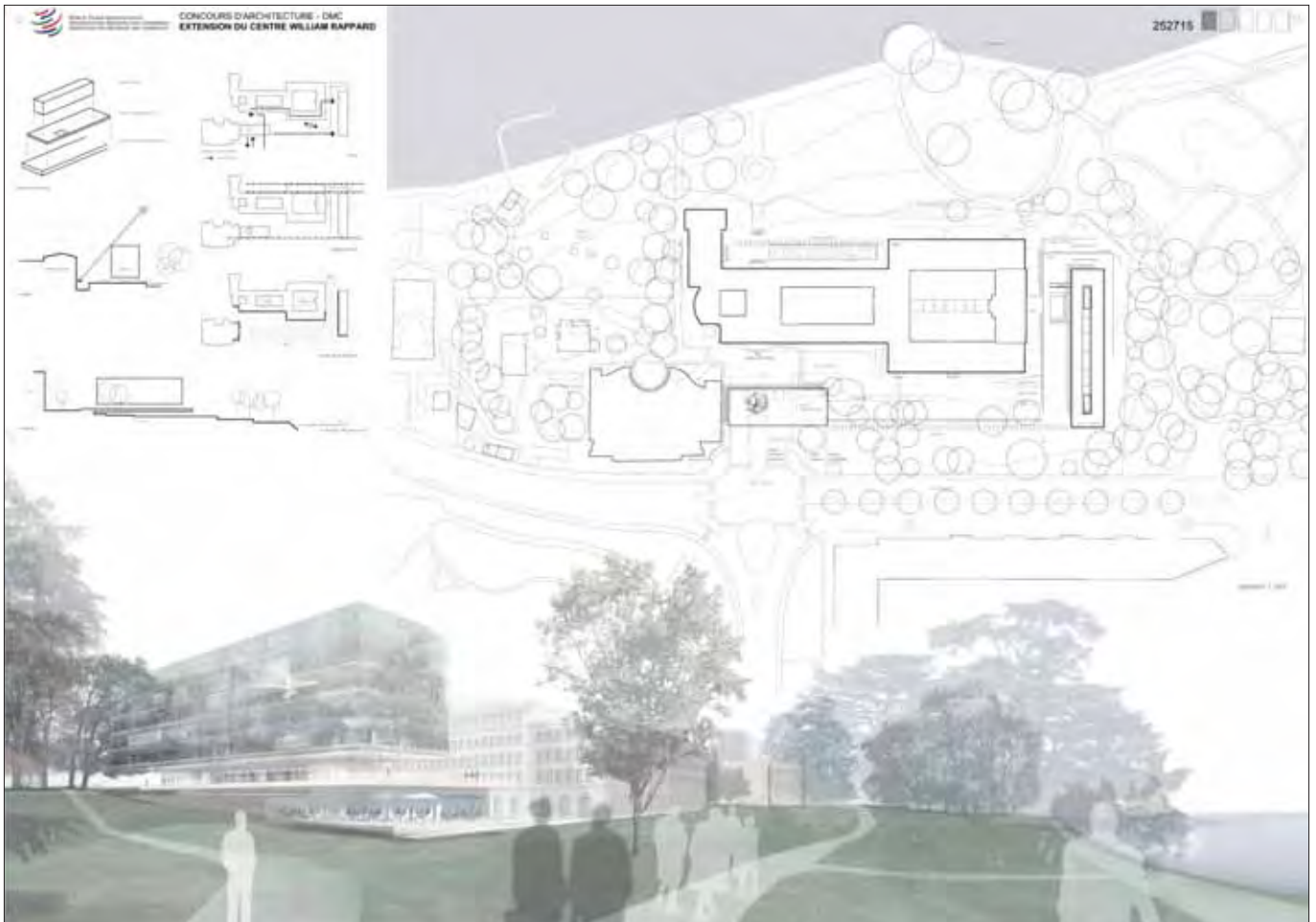
The volumetrics of the project further emphasize this strategy of avoiding conflict with the existing structure.

The extension project is composed of three very distinct entities:

- The volume integrated into the topography of the park which on the lakeside houses the restaurant.
- The library volume surrounded by its esplanade which is treated as a vast, transparent and generous exterior public space.
- The volume housing the functions associated with the working areas, which appears to be suspended above the esplanade.

This concept of stratification of activities and the resulting readability at the architectural level help enormously to integrate the project in the site.







The architecture proposed is intended to create a feeling of openness and transparency in the park, for both users and the public.

The functional concept behind the organization of the offices is simple and rational. The flexibility proposed makes it possible to respond effectively to the needs of the user. The creation of relaxation areas connected by vertical links contributes to this search for user-friendliness.

The link between the existing structure and the exterior perfectly delivers the desired fluidity since it is created at the existing ground floor level by means of a bridging space which makes it possible to preserve, with quality, all of the floor space of the existing building.

In general, the concept refines the functioning of all the activities in relation to the future users.

The jury had a few reservations about the proposal for access to the esplanade and would like it to be revised along the length of the existing structure. The treatment at ground level between the extension and the existing structure, resulting from the use of a bridging space as a link, is not very attractive and will also have to form the subject of a convincing proposal.

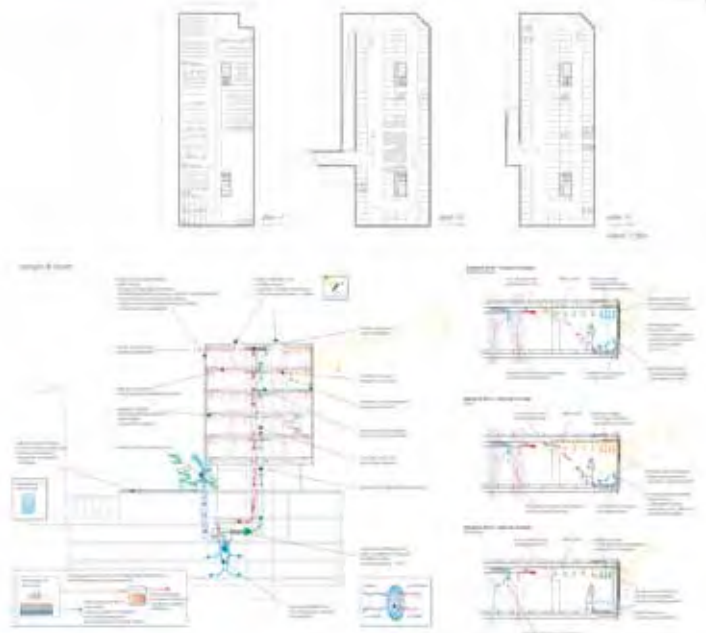
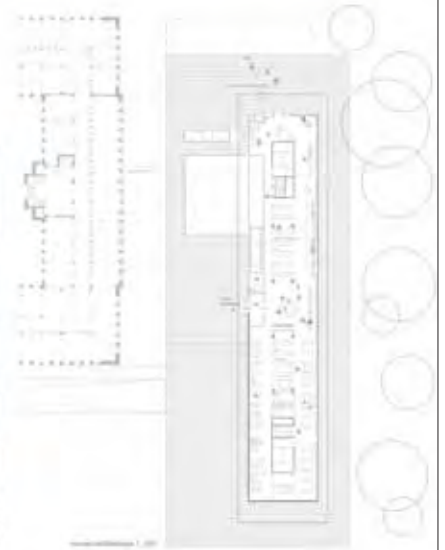
The jury recommends that the winner should work with particular care on the relationship at ground level and the anchorage of the extension in its surroundings, a major factor in ensuring the quality of integration in the site.

The project meets, with very well argued proposals, the sustainable development and energy requirements.

The analysis of the economic parameters places this project at the lower end of the valuation range.

The clear and simple urban planning and architectural concept tends to confirm this view.







**Pablo Oriol**  
**Fernando Rodríguez**  
**Pastora Cotero**  
**Cornelius Schmitz**

**Staff:** 31 INGENIERIA INDUSTRIAL S.L., INSTALACIONES,  
CLIMATIZACION, ENERGIA, Teo López, Carlos Álvarez, Javier Mota

FRPO Nolaster Arquitectura + Urbanismo  
Rodríguez Y Oriol Arquitectos SLP  
Francisco Silvela 77 6-D  
28028 Madrid  
Spain



This very representative project fits within the site like a sculpture very respectful of the park and the existing structure.

The project displays a very firm intention to allow the existing structure to live on serenely, while seeking to identify itself as a highly differentiated isolated element with a powerful architectural impact, both on the site and on the city.

This expression of a contemporary WTO fits neatly into the site, set back from the park and clearly visible from the Rue de Lausanne, like the large meeting room built a few years ago at the other end of the site, near the entrance.



The scheme of this project is in line with previous extensions and on the city side is developed as an urban planning response adapted to its location. However, the architectural expression proposed by this extension of the WTO in this particular context failed to convince some members of the jury.

The proposed link at basement level for the purpose of creating a green esplanade at the present ground floor level is a very interesting means of showing to advantage the convex volume of the project but has an adverse effect on the attractiveness and quality of the "Library and Restaurant" activities it contains.

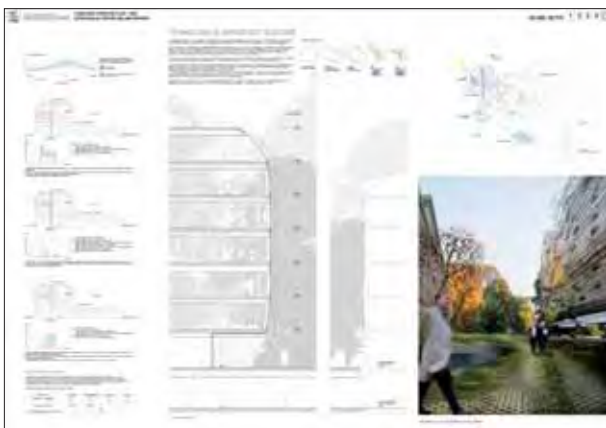
The creation of vistas and interior patios is laudable, but the earth-moving operations necessary to create them crimps the relationship between these spaces and the park as a whole. The result is an impression of a preoccupation with the treatment of the approaches in order to magnify the architectural object proposed.

From the functional standpoint, the project offers a relative flexibility.

In sustainable development and energy terms, the proposals are relevant and adapted to the project.

The analysis of the economic parameters places this project in the middle of the valuation range.

The urban planning and architectural concept clearly confirms this view.



### UN BÂTIMENT OPTIMISTE



Le site de la gare de Lyon est un espace unique, à la fois historique et moderne, et un espace public de "ville de demain". L'extension du Centre William Rappard est un projet qui vise à créer un espace public de qualité, un espace qui sera le cœur de la gare de Lyon, un espace qui sera le cœur de la ville de demain.



### PLUS DE PARC, PLUS D'OMC

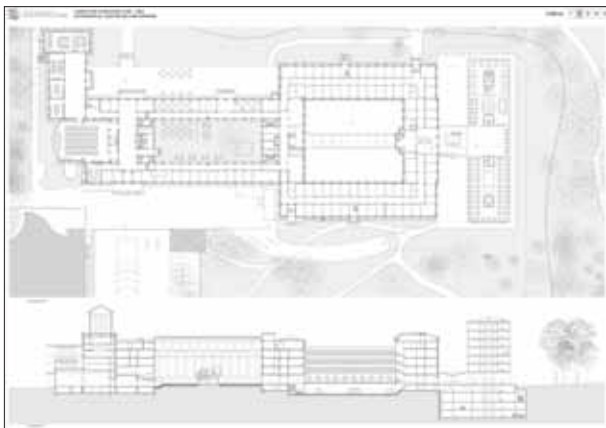
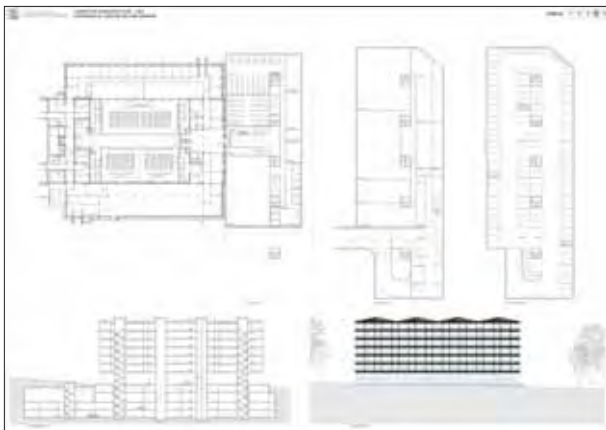
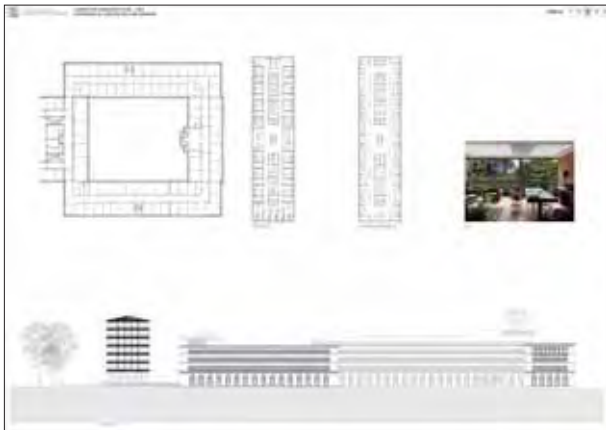




**Ilg Andreas**  
**Santer Marcel**  
**Wasescha Rico**

**Staff:** Meyer Daniel engineer, Heule Daniel engineer

ILG Santer Architekten eth  
Limmatquai 104  
8001 Zürich  
Switzerland



The project is integrated in the site in such a way as to establish a very pragmatic continuity with the various extensions from 1926 to the present.

It is perfectly aligned with respect to the volumetrics of the existing complex.

The simplicity and humility of its anchorage in the ground accentuate this quality and lend a noticeable air of modesty to its integration in the site.

The building appears to have been set down in the park as an isolated element, very respectful of its built and landscaped environment.

To reinforce this image, it treats the link with the existing structure and the whole of its ground floor as a totally transparent element designed to blend in with the park.

The restaurant and the library's reading room are grouped on the ground floor, on either side of the axis of this link.

The architectural expression and the elements proposed intensify the impression of the lightness of this object in the park.

The jury appreciated the research and the proposals for realizing the extension of the building.

The functional concept is clear and flexible and corresponds perfectly to the requirements of the programme.

The tree-like load-bearing structure, proposed to free the ground floor of all constraints, is judicious and makes an appreciable contribution to the concept of the project developed.

From the sustainable development and energy standpoint, the solutions adopted are fully adapted to the project.

The simplicity and clarity of the responses, in perfect harmony with the concept, add greatly to the quality of this proposal.

The analysis of the economic parameters places this project at the lower end of the valuation range.

The concept of the project confirms this analysis.



**Contexte**

Le Centre William Rappard est un lieu de vie et de travail pour les étudiants de l'Université de Lausanne. Il est situé dans un quartier résidentiel et est entouré de verdure. L'extension proposée vise à répondre aux besoins croissants de l'université tout en préservant l'environnement et en créant un espace de qualité.

**Concept**

Le concept architectural est basé sur l'intégration de l'architecture et du paysage. L'extension est conçue comme une série de volumes qui s'insèrent harmonieusement dans le site existant. Elle privilégie les matériaux naturels et les formes sobres, tout en intégrant des espaces verts et des zones de détente.



**Programme**

Le programme de l'extension comprend des salles de cours, des bureaux, des espaces de travail collaboratif, des espaces de détente et des zones de verdure. L'objectif est de créer un environnement de travail et d'étude moderne et agréable.

**Matériaux**

Les matériaux choisis pour l'extension sont des matériaux naturels et durables, tels que le bois, la pierre et le béton. Ces matériaux sont utilisés pour créer une architecture qui s'intègre harmonieusement dans le paysage.

**Conclusion**

L'extension proposée est une réponse innovante et durable aux besoins de l'université. Elle crée un espace de qualité qui favorise l'apprentissage et le bien-être des étudiants.



**Personeni Fabio**  
**Raffaele Colette**  
**Raffaele Fabrizio**  
**Schärer Cédric**  
**Choy Wilmay**

**Staff:** Major Carole, Roukoz Dany, Casson Julie, Idrac Marguerite

Personeni Raffaele Schärer Sàrl  
Rue St-Pierre 1  
1003 Lausanne  
Switzerland



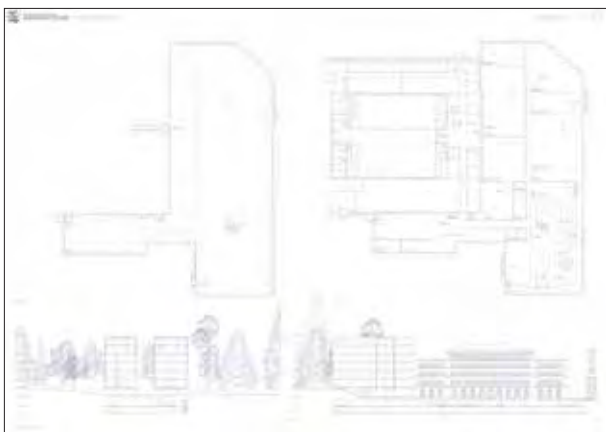
The project is integrated in the site with a certain vibrancy in perfect harmony with the composition of the park.

The proposed extension is very respectful of the existing structure and leaves the present prospects and views of the park and the lake completely unaffected.

The attitude and the relationship with the ground are intended to be minimalist, without encumbrance or obstacle, and very permeable for the near environment.

The striving for fluidity and the rapport with the park are important and laudable features of the concept.

The architectural expression reinforces this notion of not creating a front or brutal mass and the material form of the project – “irregularly stacked plates of glass” – accentuates this desire not to offer a snapshot or readable reflection of its environment – “each story reflects a partial image of its environment”.

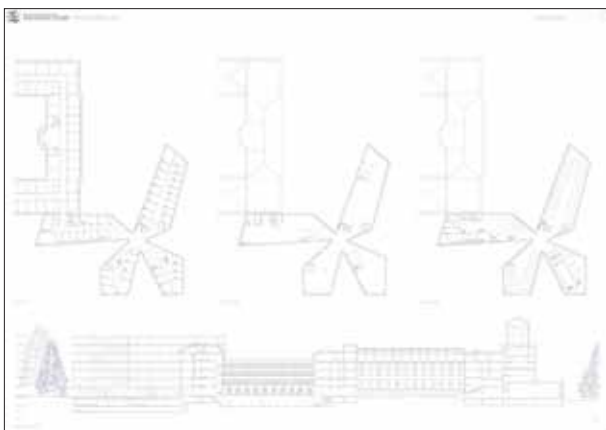


The functional concept and the various spaces it can generate do not provide all the flexibility necessary to satisfy the Commissioning Organization’s requirements with regard to change.

The relaxation areas, both in front of the vertical links and in the corridors, are insufficiently generous.

The proposed link with the existing building on the City-Rue de Lausanne side, which cannot be seen from the park and lake side, offers interesting possibilities for communication with the existing extension, at both functional and architectural levels.

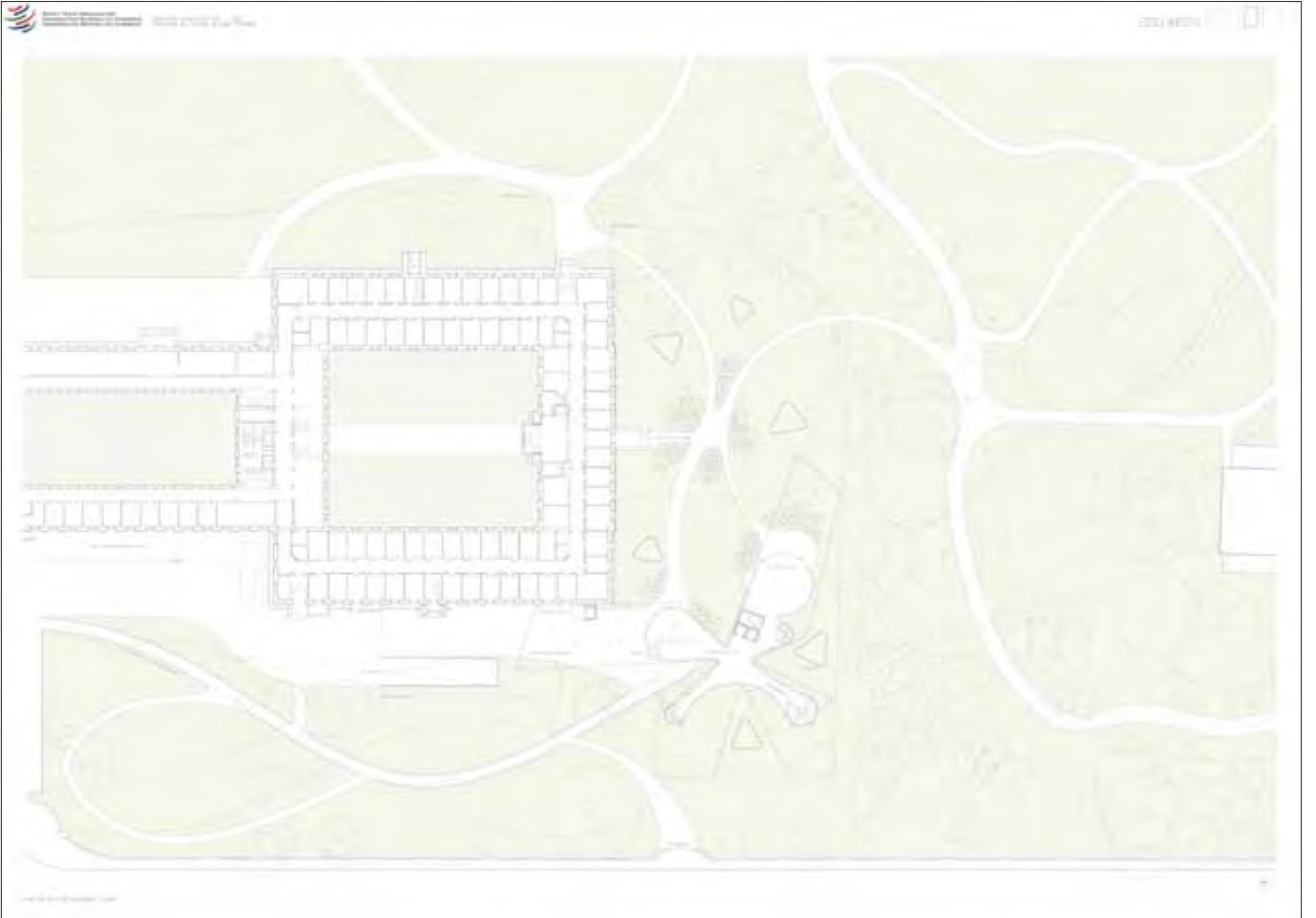
In this concept of the project, the library receives very little natural light and is incapable of providing a representative and user-friendly workplace for the WTO.



The project developed gave rise to a high-quality discussion, but the spaces generated and proposed by this scheme in general are minimalist and perfectly adapted to the concept.

With regard to energy and sustainable development, the project takes into account a strategy for meeting the requirements of the Minergie label.

The analysis of the economic parameters places this project in the middle of the valuation range.



N° 95\_FRAMEWORK



**Frei  
Rezakhanlou**  
Staff: Sarah Hay, Joao Fernandes

Frei & Rezakhanlou  
Architecture EPFL-SIA  
Rue des Voisins 15  
1205 Genève/GE  
Switzerland

Frei & Rezakhanlou  
Architecture EPFL-SIA  
Avenue Mon-Repos 8 bis  
1005 Lausanne/VD  
Switzerland



The project adopts the solution of distancing itself very clearly from the existing complex.

The volumetrics of the extension close to the large trees constitute an attempt at integration through landscaping to soften the impact of the building on the site.

This siting strategy makes it possible for the project to be slotted in as an independent object without competing in any way with the existing structure.

The proposed setback has considerable advantages in creating views and vistas, both for users and for people walking through the park.

The link with the existing structure at ground floor level helps, with the esplanade it generates on either side, to enhance this impression of space and openness.



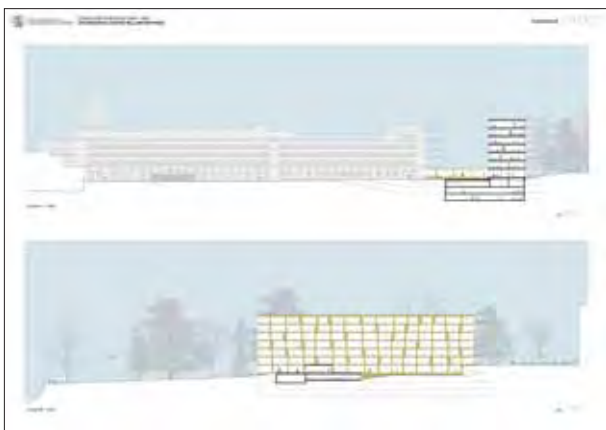
The esplanade on the Lausanne side provides access for services. That on the park side serves as a terrace for the restaurant with a view of the lake.

The simplicity of the volumetrics proposed and the architectural realization of the facades help to create the modest effect desired.

The jury criticized the overall treatment of the esplanade and the resulting pedestal under the extension on the lake and park side.

The organization proposed takes good account of the programme of the Commissioning Organization.

The ground floor restaurant on the lake side and the library on the top floor have good views, and the office spaces with their fine outlook on the close environment were considered very appealing.



The structural concept at functional level provides for a very high degree of flexible use.

In terms of sustainable development and energy, the concept proposed is perfectly adapted to the project.

The analysis of the economic parameters places this project at the lower end of the valuation range.

The urbanistic and architectural concept clearly contributes to this result.





échelle : 1:500



**Regulation de l'extension globale**

Le projet de l'extension globale est défini par un ensemble de principes directeurs qui ont été élaborés en collaboration avec les services de l'Etat et les services de la ville de Lausanne. Ces principes ont pour objectif de garantir la cohérence et la qualité de l'ensemble du projet, tout en tenant compte des contraintes réglementaires et des besoins de la communauté. Les principes directeurs sont les suivants :

- Le respect de l'identité et du caractère du site existant.
- La création de nouveaux espaces publics et de courtyards.
- Le respect des contraintes réglementaires et des besoins de la communauté.
- La création de nouveaux espaces publics et de courtyards.
- Le respect des contraintes réglementaires et des besoins de la communauté.

**Choix de l'extension globale et des volumes architecturaux**

Le choix de l'extension globale et des volumes architecturaux a été défini en collaboration avec les services de l'Etat et les services de la ville de Lausanne. Les choix ont été définis en fonction des contraintes réglementaires et des besoins de la communauté. Les choix sont les suivants :

- Le choix de l'extension globale et des volumes architecturaux.
- Le choix de l'extension globale et des volumes architecturaux.
- Le choix de l'extension globale et des volumes architecturaux.

**Présentation de l'extension**

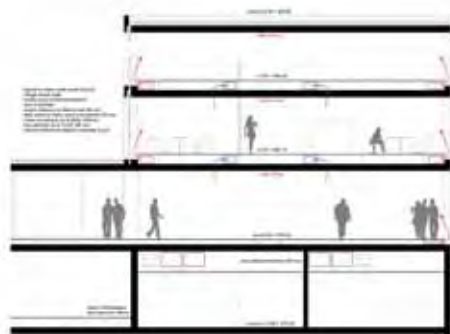
Le projet de l'extension globale est défini par un ensemble de principes directeurs qui ont été élaborés en collaboration avec les services de l'Etat et les services de la ville de Lausanne. Ces principes ont pour objectif de garantir la cohérence et la qualité de l'ensemble du projet, tout en tenant compte des contraintes réglementaires et des besoins de la communauté. Les principes directeurs sont les suivants :

- Le respect de l'identité et du caractère du site existant.
- La création de nouveaux espaces publics et de courtyards.
- Le respect des contraintes réglementaires et des besoins de la communauté.
- La création de nouveaux espaces publics et de courtyards.
- Le respect des contraintes réglementaires et des besoins de la communauté.

**Présentation de l'extension**

Le projet de l'extension globale est défini par un ensemble de principes directeurs qui ont été élaborés en collaboration avec les services de l'Etat et les services de la ville de Lausanne. Ces principes ont pour objectif de garantir la cohérence et la qualité de l'ensemble du projet, tout en tenant compte des contraintes réglementaires et des besoins de la communauté. Les principes directeurs sont les suivants :

- Le respect de l'identité et du caractère du site existant.
- La création de nouveaux espaces publics et de courtyards.
- Le respect des contraintes réglementaires et des besoins de la communauté.
- La création de nouveaux espaces publics et de courtyards.
- Le respect des contraintes réglementaires et des besoins de la communauté.

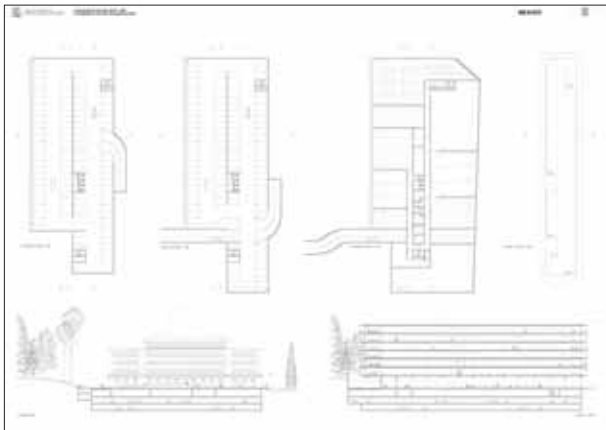




**Rolli Marchini**

**Staff:** Rolli Michael, Marchini Francesco, Arnold Romane

ROLLIMARCHINI GMBH  
Gutenbergstrasse 14  
3011 Berne  
Switzerland

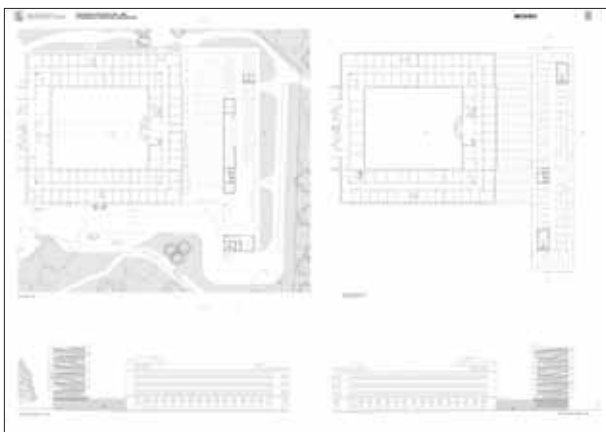


The project opts for extending the ground floor of the existing structure by means of a large transparent, well lit and spacious level. It is intended to serve as a basis in the park for the development of a project with an uncompromisingly contemporary image.

The siting makes it possible to have ample clearance between the existing building and the extension, thereby creating outward views for the user over his environment.

The library and the restaurant, together with the reception area and the access to the vertical links, are located on the very well lit ground floor.

The clarity with which these functions follow on from each other was much appreciated by the jury.



Only their accessibility and the route by which they are reached attracted criticism, particularly with regard to the choice of a single lateral ramp.

The highly rational functional concept provides a high degree of flexible use for the users with quality spaces that can easily be adapted.

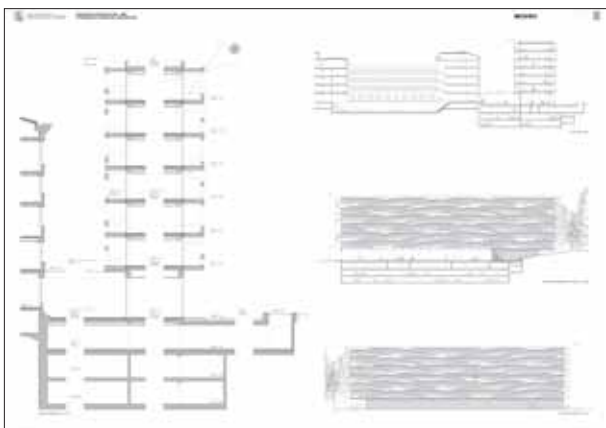
All the parameters of the programme have been taken into account and well integrated into the project. The architectural image gave rise to a very interesting discussion. The candidate explains it as follows:

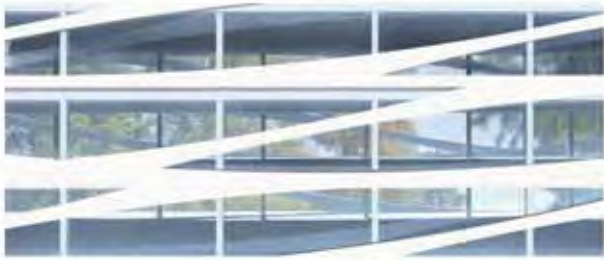
“forming a composition by the repetition of identical reinforced-concrete arches, the facade of the volume expresses the unity, transparency and development of an international institution responsible for opening up trade.”

The external walkways balcon offer numerous advantages from the technical and operational standpoints and are perfectly adapted to the concept of the project.

This option has the disadvantage of increasing the mass and the presence of this volume in the park.

With regard to energy and the analysis of the economic parameters, the concept deals convincingly with these concerns.





meshed



**Einleitung**  
 Die Erweiterung des Gebäudes soll die bestehende Struktur des Gebäudes im Wesentlichen beibehalten und durch neue, moderne Strukturen ergänzen. Die Erweiterung soll die bestehende Struktur des Gebäudes im Wesentlichen beibehalten und durch neue, moderne Strukturen ergänzen.

**Grundriss**  
 Der Grundriss zeigt die bestehende Struktur des Gebäudes im Wesentlichen beibehalten und durch neue, moderne Strukturen ergänzen. Die Erweiterung soll die bestehende Struktur des Gebäudes im Wesentlichen beibehalten und durch neue, moderne Strukturen ergänzen.

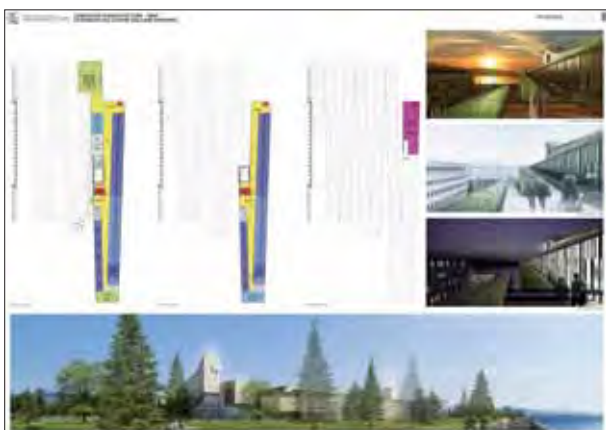
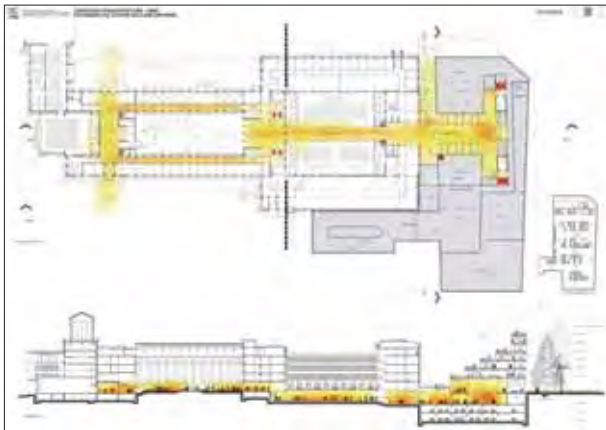
**Querschnitt**  
 Der Querschnitt zeigt die bestehende Struktur des Gebäudes im Wesentlichen beibehalten und durch neue, moderne Strukturen ergänzen. Die Erweiterung soll die bestehende Struktur des Gebäudes im Wesentlichen beibehalten und durch neue, moderne Strukturen ergänzen.





**Julien Rousseau**  
**Romain Viault**  
**Staff:** Luca Battaglia, Ulisse Gnesda

Fresh Architectures  
 10, rue Mercoeur  
 75011 Paris  
 France



The project proposes a very convincing concept of urban planning and architectural integration in the site. The progressive distancing of the extension from the existing structure and its treatment have much to offer users of the WTO.

From the existing building one has the impression of the park spreading into a third dimension with the proposed landscaped promenade on the roofs.

The interpenetration of the park, the project and the body of water at ground floor level reinforces the bucolic aspect of this proposal.

Within this theme, the organizational concept is very consistent and the programme functions, such as the library, the restaurant and the vertical links, are judiciously placed. The offices offer user-friendly and flexible planning alternatives.

Within this context, the accessibility of the project and the proposed promenade are perceived as an encouragement to continue the park onto this promontory and to regard it as an attractive public relaxation area.

This characterization of the area would conflict with the actual use of the site and could not engender the animation and harmony it is intended to offer within the landscape.

The candidate describes his project in the following words:

“This new extension provides an opportunity to make the WTO’s mission more visible thanks to an architecture that is ambitious, poetic and rich in meaning.

We propose to extend the existing structure by means of a ‘pathway of the nations’ rising up into the sky, a metaphor for the exchanges and consultations that take place under the auspices of the WTO. The promenade ends in a belvedere overlooking the lake.

This pathway illustrates the dynamism of trade between Members of the WTO through the flags that represent them.

This building / promenade is a symbol with a high degree of visibility on every scale. Seen from above and the terraces, the serried flags of the nations will appear. On the scale of the pedestrian, the harmony of the park is preserved.”



Le plan de l'édifice est l'élément central de l'organisation spatiale du bâtiment. Il est le point de départ de toutes les décisions architecturales et techniques.

Cette nouvelle extension est l'occasion de réviser une tradition à la mesure de l'échelle, grâce aux possibilités architecturales offertes par le site.



Une impression de dialogue spatial est créée par un alignement des volumes à l'échelle du site, intégrant des éléments de la composition urbaine existante. La nouvelle extension se situe en continuité spatiale avec le site.

Un chemin structuré de déplacement est proposé entre les deux parties de l'édifice, à l'aide de passerelles et de ponts.



Le bâtiment s'inscrit dans un contexte urbain existant et s'aligne sur la rue. Les volumes sont organisés en fonction de la topographie du site, permettant de créer des espaces extérieurs et intérieurs.

Les volumes sont articulés autour d'un axe central, créant des espaces intérieurs et extérieurs qui se complètent.



Amérique

Afrique

Europe

Asie

Océanie



# SPECIAL MENTION

N° 80\_SEKITEI

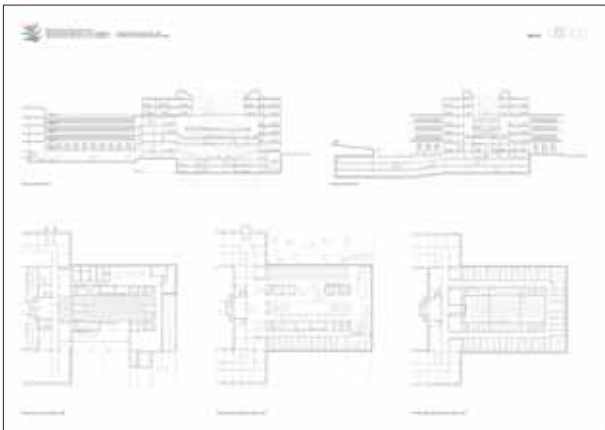


**Maurice Berrel**  
**Raphael Kräutler**  
**Rafael Schmid**  
**Radek Brunecky**

**Staff:** Ulaga Tomaz, Regis Mario, Balliana Sandro, Schmid Heinz

**BERREL BERREL KRÄUTLER ARCHITEKTEN**

Am Wasser 55  
CH-8049 Zürich  
Switzerland

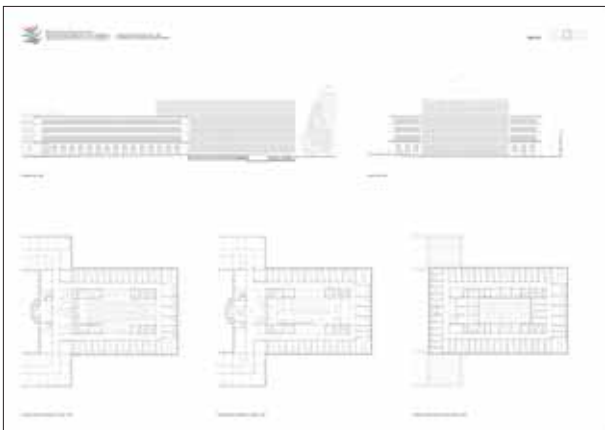


From the urban planning standpoint, the project provides continuity with the existing architectural heritage.

It offers a clear and consistent reading of the various elements built over the course of time and seeks not to disturb the harmony of an overall concept perceived as such within the landscape.

The building has undergone several extensions but all have been integrated into the existing architecture and this scheme proposes the continuation of the same concept.

It minimizes the impact of the building at ground level and enables the park on the lake and rue de Lausanne sides to continue to expand toward the built structure. It does this very cleverly since it ensures perfect integration with the topography of the site. This is a very rigorous project and an academic composition.



The compact volumetrics do much to enhance the quality of the treatment of the site, but do little for the perspective from the lake.

The model is very symptomatic in reflecting the force of this proposal which becomes almost natural.

The composition of the architectural proposal and the resulting image on the perspective gave rise to a constructive discussion of the perception of a modern addition to a continuous existing complex. The architectural expression failed to convince a majority of the members of the jury.

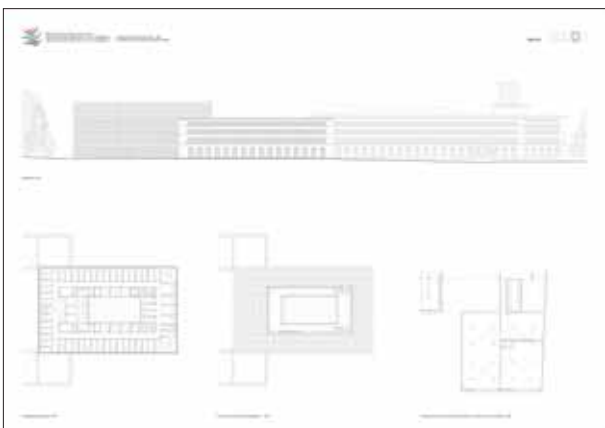
The functional concept and the organization of the interior spaces are of the highest quality.

The siting of the restaurant and the library, with its top lighting, is very user-friendly.

The traffic flows are integrated with the existing structure, which accentuates the unity and the possibilities for fluid use of the complex as a whole.

The structural aspect is rational and the compact organization of the project helps to ensure its efficiency at the sustainable development and energy levels.

The overlap with the existing structure lies outside the perimeter but makes a considerable contribution to the consistency and strength of the project.



The extension of the Centre William Rappard is a project that aims to modernize the existing building and create a new, more functional and sustainable structure. The project is led by the International Institute for Applied Systems Analysis (IIASA) and is supported by the World Trade Organization (WTO). The new building will be designed to meet the needs of the organization's growing staff and to provide a more pleasant and productive work environment. The design process involved extensive consultation with the staff and the architect, resulting in a plan that reflects the organization's values and mission. The new building will be a landmark addition to the Centre William Rappard and will serve as a model for sustainable and functional office design.



The building extension is designed to provide a more functional and sustainable work environment. The design features a variety of office spaces, including open-plan offices, private offices, and meeting rooms. The building is also equipped with modern amenities, such as high-speed internet, ergonomic furniture, and natural lighting. The extension is designed to be energy-efficient and to have a low carbon footprint. The project is a testament to the organization's commitment to sustainability and to providing a high-quality work environment for its staff.

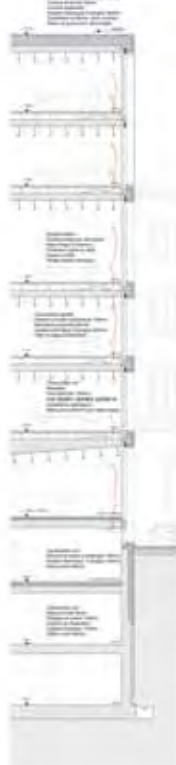


Figure 1

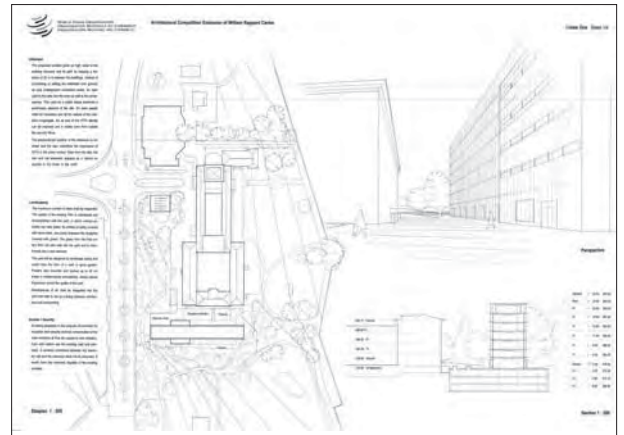
Figure 2

Figure 3

## N° 01\_LINEAR ONE

Christian STAMM ARCHITEKT

Christian STAMM ARCHITEKT  
Lux Guyer-Weg 7  
8006 Zürich  
Switzerland



## N° 02\_MEDIATION

**Peter Chomowicz AIA**

Staff: Baum Christian designer model builder  
Kofi Bruce designer 3d modeller

QUADRANT  
ARCHITECTURE & CONSULTING, LLC  
Chomowicz Peter  
33 Cedar Ave.  
Towson, MD 21286



## N° 03\_1321059

**arch. Mina Sava**

Staff: arch. Musteata Silviu, arch. Sava Veronica

A STIL  
str. Sergent Dumitru Matei n°6  
Bucharest sector 2  
020321 Romania



## N° 04\_VISSI D'ARTE

**Acciario Guglielmo**

Staff: Acciario Marta, Ballo Alfonso, Buttice CalogerContino  
Alessandra, Contino Pierluigi, Ficarra Daniela, Rosario  
Giambona, Vincenzo Marchese, Alain Victor Mutwe, Luigi  
Smecca, Giambona Rosario, Marchese Vincenzo, Mutwe Alain,  
Smecca Luigi

Guglielmo Acciario  
Via Quintino Sella 62  
90139 Palermo  
Italy





**N° 05\_34860**

**DOLGEN Hakan**

Staff: COLOGLU Zeynep Architect, ERYUKSEL Hayrettin Architect, SENYURT Gokhan Architect, ERYILDIZ Ali Architect, BAKIR Dogan Graphic Designer, TEIZEL Veyel Kerim-Model.

Hakan Dolgen Architects  
A.Nafiz Gurman Mah Gunay Sok. Emek Sitesi 4/3  
34173 Merter  
Istanbul



**N° 06\_udarmerm2**

**Sun Cheng Hsien**

SUN CHENG HSIEN  
N° 9, Lane2, Sec 2  
Chongsing Rd, North District  
Taichung City 404  
Taiwan



**N° 07\_ESPEJ02008**

**Li Chung Pei - architect**

Staff: Matias Honorato - project designer, Alejandro Chinchon - project designer

Pei Partnership Architects LLP  
257 Park Avenue South  
New York, New York  
10010-7304  
USA



**N° 08\_YYZ2112**

**DAMY, NEIL**

Staff: Gurierrez Gabriela, Portillo Yannick

Damnov y Asociados S.C.  
Av. Abedules 317 Int. 1  
Col. Los Pinos  
C.P. Zapopan, Jalisco  
Mexico



**N° 09\_17171**

**Raiski Pentti, M.Sc (Arch)/POOKArchitects Ltd**  
**Rautiala Katariina, M.Sc (Arch) SAFA/POOK Architects Ltd**  
Staff: Quinones Alberto, Airikkala Ilari, Mihashi Eriko

POOK Arkkitehtitoimisto Oy/Architecte Ltd  
Snettansintie 15  
02740 Espoo  
Finland



**N° 10\_36117778**

**Camilo Rebelo**  
Staff: Chicau Cristina, Guedes Patricio, Santos Maria, Sofia,  
Marques Miguel, Reis Claudio,  
Castro Ana Margarida

Camilo Rebelo  
Rua da Arrabida 189/193  
4150-110 Porto  
Portugal



**N° 11\_1981977372349**

**Brent T. Cook and David K. Hall**  
Staff: Cook, Brent T. Principal Architects, Hall David, K.  
Principal Architects, Arnold, Barry ARW, Structural Engineers  
Spencer, Neil Van Boreum & Frank, Mechanical Engineers 593  
Laird Avenue, Salt Lake City,  
Utah 84105

PRINCIPAL ARCHITECTS  
BRENT T. COOK ARCHITECT AND ASSOCIATES  
1593 Laird Avenue  
Salt Lake City, UT 84105  
USA



**N° 12\_LAKESIDE**

**FTA Design Studio Inc.**  
Staff: FTA Design Studio, Inc.

FTA Design Studio Inc.  
400 E Royal Lane  
Suite 208  
Irving  
TX 75039  
USA



## N° 13\_1181530BOOH

### Fernando Miguel Gomes Meirinhos

Staff: Lopes Pedro - senior architect, Oliveira Pedro junior architect, simoes Ana - junior architect

Fernando Miguel Gomes Meirinhos  
Rua Clemente Menéres 19  
4050-201 Porto  
Portugal



## N° 14\_WOTOTW

### Heneghan Peng architects

Staff: O'Brien Glenn, Sreenan Conor, Taravillo Jorge, Salmon Robert, Kroeber Jonas, Archer Francis, McLaughlin Tony, Mueller Robert

Heneghan Pen Architects Ltd  
Heneghan, Roisin & Peng, Shih-Fu  
14 - 16 Lord Edward Street  
Dublin 2  
Ireland



## N° 15\_158075033

### Dekany Tibor Finta Sándor Hatvani Adám Evva Ambrus

Staff: Balogh Zsuzsa - architect, Csapo Balázs -architect, Molnar Diána - architect, Szorendi Adám - consultant, Varhidi Bence - architect

Sporaarchitects KFT  
Hutyra Ferenc U. 11-15.III  
1074 Budapest  
Hungary



## N° 16\_LES JARDINS

### Finnlimited Oy Architects and engineers

Staff: Vasiljevic Sonja - arch. M.Sc. Project designer, Vikkula Merja - arch SAFA M.Sc. Assit designer, Ricci Ludovico - arch.B.Sc. Assist. designer, Filatova Svetlana - arch.B.Sc. Assist. designer, Jouvenel Nora interior -arch. 3Dvisualisation specialist, Loukas Tero -engineer M.Sc. structural designer, Rantamaki Timo - engineer M.Sc. HVAC specialist, TEAM FINNLIMITED - the model

Finnlimited Oy  
Architects and engineers  
Esa Sallinen Höyläämötie 3B 3krs  
FI 00380 Helsinki  
Finland



## N° 17\_240346

**Mathias Lange  
Torsten Sauer  
Sebastian Brunke**

Staff: Wetzels & Von Seht - ingenieurbüro für Bauwesen

Interpolar Architects  
Schweinsbrücke 4  
D-23966 Wismar  
Germany



## N° 18\_378052

**Paula Santos**

Staff: Nuno Silva, Vasco Novais, Ricardo Granja, Joaquim Santana, Adao da Fonseca, Raul Bessa

Paula Santos Arquitectura Sociedade Unipessoal, Lda  
Rua Professor Mota Pinto  
N°.218,4100-356 Porto  
Portugal



## N° 19\_LIAISONS

**Andres Carosio**

Staff: Team Carosio Architectes: Katrin Derleth, Heike Dingethal, Claudio Mariotta, David Toszeghi  
Technique: Gruenberg + Partner AG, Zürich  
Minergie: Meyer Bauphysik, Dällikon  
Ing. Civil: E. Zadotti  
Dipl. Bauing ETH SIA, Meilen Arch.  
Paisajiste: Bandorf Neuenschwander Partner GmbH

ANDRES CAROSIO  
ARCHITEKTEN AG  
Seestrasse 78  
8703 ERLNBACH

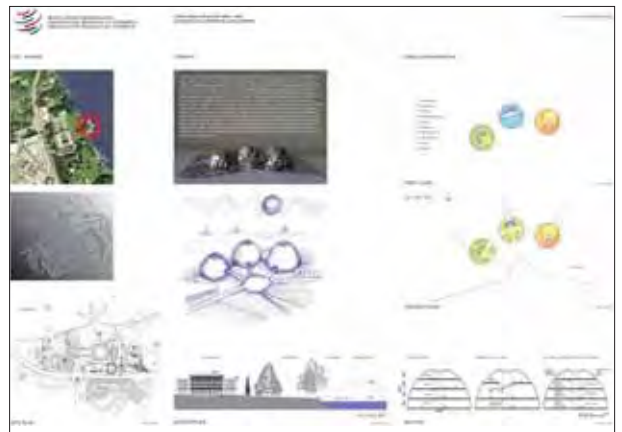


## N° 20\_OLOOL VOXPRESS

**Christian Leprette**

Staff: Johanna Leon - architect

Christian Leprette  
Architecte DPLG  
Agendarchitecture  
31 rue Gazan  
Paris 75014  
France

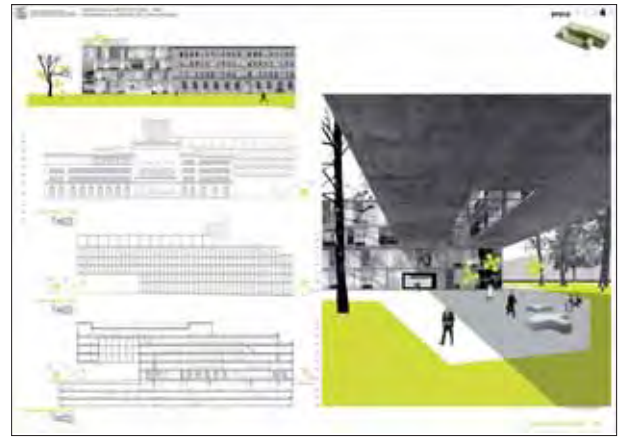


## N° 21\_5T013

**Alvaro Soto Aguirre**  
**Francisco Javier Maroto Ramos y**  
**Luis Diaz-Maurino Garrido-lestache**

Staff: Lozano Brackelmanns Elena - design assistant, Gonzalez Menendez José Javier - design assistant, Martin Palomeque Pablo - design assistant, HCH Model - model designer

ALVARO SOTO AGUIRRE  
Fortuny 37  
Bajo Derecha  
28010 Madrid  
Spain

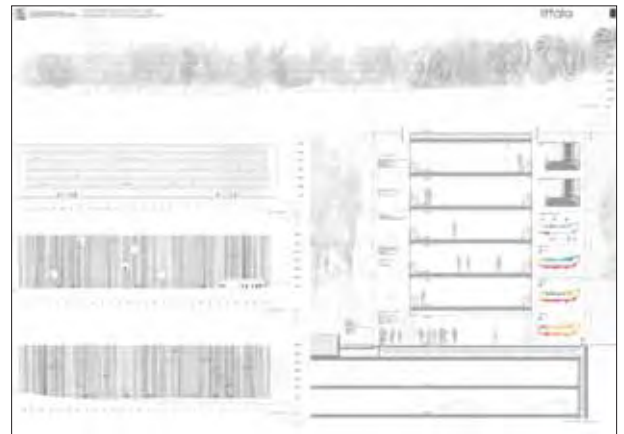


## N° 22\_IITTALA

**Eduardo Pesquera Gonzalez**  
**Jesus Ulargui Aguruza**

Staff: Sánchez Limón Jorge, Sastre Arce Judith, Peralta Muñoz Alfonso, Mosquera González Javier, Cifuentes Antoni Manuel, Domínguez Santana Natalia, Gómez Abecia Cristina, Mingo Julián, Viches Menénez José Antonio

UP ARQUITECTOS  
C/Fernando Garrido 12. Local  
28075 Madrid  
Spain



## N° 24\_1TRANSPARENT1

**Adam Biatobrzewski - arch.**  
**Adam Figurski - arch.**  
**Maria Messina - arch.**

FAAB Architektura Biatobrzewski Figurski  
Poland 04 - 147 Warszawa  
11Stoczkowska St Suite 8  
Poland



## N° 25\_PAPILLON

**EMMA**

Staff: Ir Jurg Hertog, Ir Marten de Jong, Ir Gerdo Wweltevreden, Catherine Page Chausse, Felix Lavallee

EMMA  
Parooltoren 6e etage  
Wibautstraat 129  
1091 GL Amsterdam  
The Netherlands



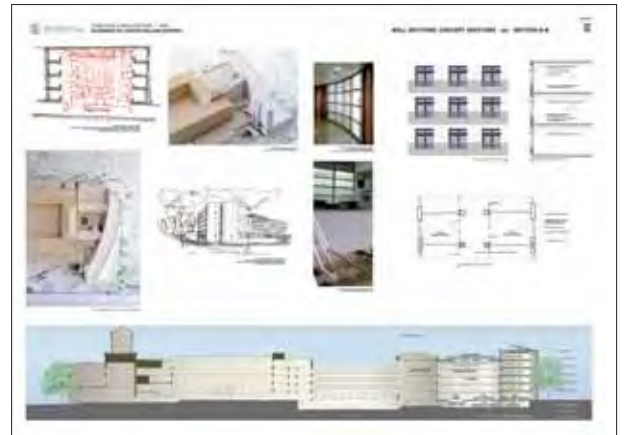
## N° 26\_0034678716

### Philip Loheed

#### AIA

Staff: John Hyacinth -architectural design, Howard-McHugh Sarah - model design, Mooney Laurie - project coordination

Philip Loheed, AIA, Principal  
BTA + ARCHITECTS  
678 Massachusetts, Suite 400  
Cambridge, Massachusetts  
02139 USA



## N° 27\_BDESLDG4613

### Coy & Yiontis Pty Ltd

Staff: Donaldson Ben -architect, Slocombe Erica -architect, Dalmasso Luca -architect assistant, Yiontis George-architect

Coy & Yiontis Pty Ltd  
ACN 004 013 754  
Level 2/387 Clarendon Street  
South Melbourne  
3205 Australia



## N° 28\_QOOHL

### Raphaël SEGOND Architecte

Staff: Chef de projet Jonatan INZERILLO  
Assistants Ronan Tarlet, Julien HUBERT, Guillaume GIBERTI,  
Lionel CESAROLE, Consultants Jean-Marc Hueber, NEXT  
ENVIRONNEMENT, BRACE INGENIERIE

Agence Raphaëlle SEGOND  
42, rue Saint Saens  
13001 Marseille  
France



## N° 29\_WTOFADERSBLDG

### Julie Rosier

Hervé Winkler

Hervé Winkler & Julie Rosier Architectes  
7 rue Boule  
75011 Paris  
France



## N° 30\_210208

**Iodici Francesco**  
**Iodice Giuseppe**  
**Pezone Orsola**  
**Sivestre Marcello**

Staff: Sembiane Stefano (bioclimatic), Maisto Francesco (ergonomic aspect), Di Santo Giovanni (landscape study), Donatello Diana (management), Mario Cavagnuolo (3d model)

Giuseppe Iodici. Via G. Sanfelice 52. 81031 Aversa (CE) Italy  
Pezone Orsola. Via 25 aprile 25. 81031 Aversa (CE) Italy  
Francesco Iodici. Corso Italia 1a. 81031 Aversa (CE) Italy  
Silvestre Marcello. Via Torrebianca 29. 81031 Aversa (CE) Italy



## N° 31\_CŒUR VERTICAL

**Christophe PRESLE**

Staff: Kosinski Nicolas -architect, La Selva Adrien -architect, Gaspari Jean-Marc - architect, Maury René - architect, Pellarin Adélie - architect, Senault Marie - secretary

Atelier Christophe PRESLE  
18-22, rue François de Neufchateau  
54000 Nancy  
France



## N° 32\_evragae45sig

**RAVI SIKRI**

Staff: Umar Mohd - architect drawing, Singh Sanjay - computer, Kumar Praveen - engineer structures

RAVI SIKRI & ASSOCIATES  
35 DERA MANDI ROAD  
MANDI  
NEW DELHI - 110047  
INDIA



## N° 33\_E2R3M58P4F7E

**Maurizio Aroldi**  
**Raimondo Campanini**

Staff: Francesca Fiaccarini - arch. project, Francesca Fiornetini - arch. project, Elisabetta Allievi - graphics and design, Emmanuela Cozzi -arch. jr, graphic design, Marco Marchettini - arch. rendering, Camilla Campanini - arch. jr, design

Group LAB9A  
Maurizio Aroldi Architetto  
Via Gaudenzio Ferrari 9/a  
20123 Milano  
Italy



## N° 34\_ADT06

### Surbana International Consultants Pte Ltd

Staff: Scherrieble Barbara -presentation layout-Fleetwood Claire - presentation layout, Li Christine - planning & presentation layout, Lim Chun Keat - design section & detailing, Lee Hoen May - cad & model coordination, Pong Woon Wei - design, planning modelling, Castro Raymund Perez - design, rendering & modelling, Wong Jia Wei - design, section & elevation, Zhang Wen Jing - cad, Mr. Frven Lim Yew Tiong

Surbana International Consultants Pte Ltd  
168 Jalan Bukit Merah  
Surbana One Singapore



## N° 35\_4574132216

### David Titz

Staff: Martin Kral, Martin Matusu

Archicon s.r.o  
Ing. Arch. David Titz  
Kneslova 5  
Brno - Cernovice 618 00  
Czech Republic



## N° 36\_AGORA

### Fernando Donis

DONIS Wijnbrugstraat 37  
Rotterdam  
The Netherlands



## N° 37\_0398240813

### Albert Mo James Coombe CJ Foo

Staff: Goh Eid - director, Pai Thomas - director

Architects eat  
level 2, 227 commercial road  
south yarra, victoria  
3141 Australia





## N° 38\_20051

### Speicher Anne Levedag Ralf

Staff: Levedag Ralf -co author, Klaus Peter -sustainability, Niels Kretschmann - visualisation, Axel Steinmüller – model

15000 ARCHITEKTEN  
71 Rue de Lourmel  
75015 PARIS  
France



## N° 40\_L'OUVERTURE

### Sidell GIBSON Architects

Staff: Taylor Gary, Erdem Alper, Kwan Anthony, Kijek Urszula

Sidell GIBSON Architects  
Holford Mews  
Cruikshank Street  
London  
WC1X 9HW



## N° 41\_TRANSPARENCE

### Jean-Daniel PASCHOUD - architecte HES SIA

Staff: Christophe Grivel - architect EPFL, Patrick Mivelaz - designer, Silvia Povoia - designer

STUDIO D'ARCHITECTURE  
Jean-Daniel PASCHOUD  
avenue de Lavaux 26  
Case postale 358  
1009 Pully  
Switzerland

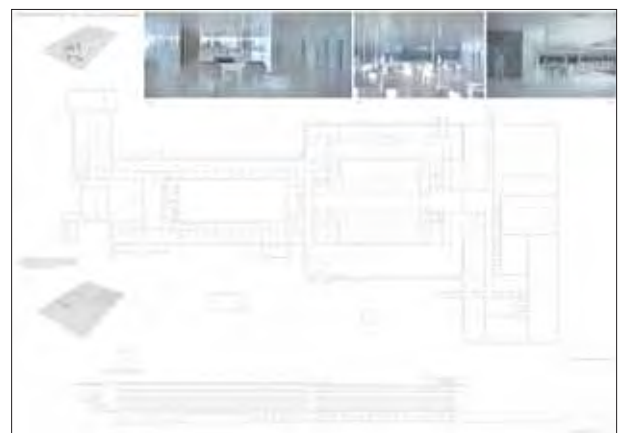


## N° 42\_HALAINE

### Dürig Ag

Staff: Jean-Pierre Dürig, Gian Paolo Ermolli, Olivier Vorgler

DURIG AG  
Feldstrasse 133  
8004 Zürich  
Switzerland

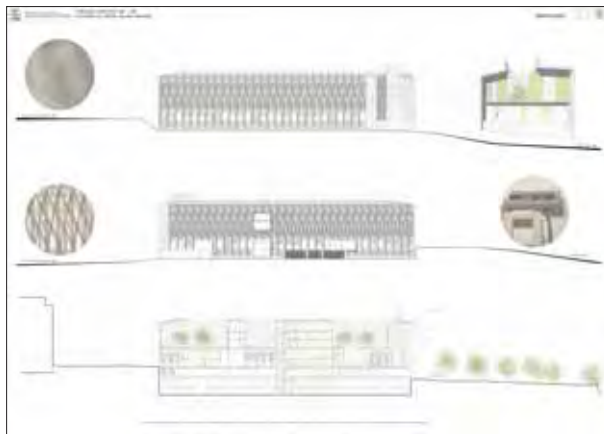


## N° 43\_190901140105

### De Amicis Giacomo

Staff: Cirillo Ermanno, De Stefani Rossella, Lavatelli Lisa, Torriani Diego, Trabattoni Luca

De Amicis Architetti  
Via Pietrasanta 12  
CAP 20141  
Milano  
Italy



## N° 44\_PARKPAVILLIONS

### Atelier des nuages

Staff: Max Fawcett, Armando Bilbao, Ismael Salva dor, Ana Maron, Alberto Sabater, Ignacio Bartret, Sofia Pomares, Marisa Garay

IDOM UK Limited  
Unit 17G The Leathermarket  
106a Weston Street  
London SE1 3QB  
UK



## N° 45\_QMXYZ888

### Mr Robert Mirams

Staff: Lincoln Scott, Specialist Environment Design, Lincoln Scott, Vision Design, Robert Bird Group structural Engineers

Fender Katsalidis Mirams Architects  
Ground Floor  
435A-437 Kent street  
Sydney NSW 2000



## N° 46\_001173

### Jürgen Bögelngborg Lindner-Böge

Staff: Christian Polke - ingenieure für Gebäudetechnik, Lutz Kessling -dipl. ing., Johannes Maas -dipl. ing., Eike Wiborny, Ulrike Bautz

Böge Lindner Architekten  
Jürgen-Böge  
Brooktorkai 15  
20457 Hamburg  
Germany



## N° 47\_210680

Lars Toksvig  
Ole Jonsson  
Jeppe Hjort Nielsen  
Jens Chr. Hoff  
Thomas Peter Lund  
Petteri Salokannel

Staff: Sorensen Henrik - Esbensen engineering AS

PLH arkitekter  
Dampfaergevej 10  
DK-2100 Copenhagen O  
Denmark



## N° 48\_RS401635

Mr Seyed Mohamad Moheet  
Mr Jalal Arab Oveissi

Staff: Mr Mehdi Nikbakht, Mr Ali Khodapanahi, Mr Mahmood Azarakhsh, Ms Ameneh Salati, Mr Babak Khorram

RahShahr/Today Engineering Consultancy  
706 AL Owais Bldg  
Al Rola Road  
Bur Dubai  
Dubai, UAE  
P.O. Box: 30916



## N° 49\_REFLECTIONS

### GRUPE H

Staff: Hervé Dessimoz - director, Christophe Favre - membre de direction, Sandrine Vergne - architect, Joelle Meneghetti -architect, Gudrun Bauer -architect, Pierre-Albert Dessimoz - engineer, Pernet & Realmonte, Bureau Hanchoz – landscape architects

GRUPE H  
Bureau d'études intégrales SA  
42 chemin du Grand-Puits  
1217 Meyrin



## N° 52\_CHCHC

Belvedere  
Kohlloffel  
Rigazio

Staff: Sofia Castagneri, Andrea Bauchiero, Enrica Ponzo, Stefano Oletto, Paolo Dall'Ara, Simone Maniscalco

Hermann Khollöffel  
Via Asti 12  
10131 Torino  
Italy



**N° 53\_00BKMAHLCLP8**

**Bruno Huerre**

Staff: Agence Bruno HUERRE, Levy Karine DROLDAX, Atoine Pace, Christine Lacoïn, Martin Coulombe Architecte, CTH Fluides et Environnement

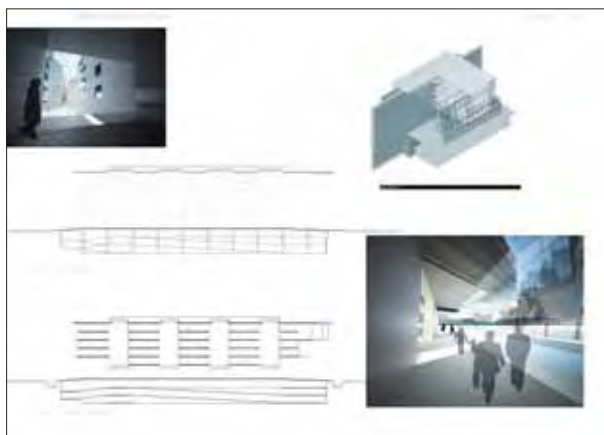
Agence Bruno HUERRE  
11 rue Cels  
75014 Paris  
France



**N° 54\_808080808**

**Amy Anderson  
Joon Chung  
Ardison Garcia  
Douglas Hebert  
Tomoko Suzuki**  
Staff: Arup Engineers

Amy Christie Anderson Architects llc  
2987 Kalakaua Avenue  
Honolulu  
Hawai'i 96815



**N° 55\_DASLDIF**

**Felix Bonnie  
So Kwok Yun**

Staff: Andrew Law Partner, Thomas Chan Interior Designer, Sam Wang Architecture Designer, Double Li Interior Designer, Nicole Ni Project Assistant

d.o.p. studios (DPWT Design Ltd.)  
1201 Tung Sun Commercial Centre  
194 Lockhart Road  
Wan Chai,  
Hong Kong



**N° 56\_DIAPHANE**

**Schuurman Architects**

Staff: Martoq Ghislaine, Haikonen Pauliina

MARTINUS SCHUURMANN  
TOPELIUKSENKATU 15D  
00250 HELSINKI  
FINLAND



**No. 58\_1427A**

**Stéphane Perianu**  
**Michael Munteanu**  
**Dan Munteanu**

Staff: Eva Evolceanu, Bogdan Rusea, Karim Issaad, Glen Lewkowicz, Sandra Munteanu, Smail Boubaya, Lysiane Bonnin

Archi-Tecture  
48, allée Darius Milhaud  
75019 Paris  
France



**No. 59\_l'effet naturel**

**noname29. Alfredo Paya Benedito**

Staff: Arturo Calero Hombre Arquitecto, Sonia Miralles Mud. Arquitecta, Vincente Pascuale Fuentes Arquitecto, Beatriz Vera Paya Interiorista, Juan Jesus Gutiérrez Sanchez Ing. Industrial, José Carrasco Hortal Arquitecto, Natalia Velasco Velásquez Arquitecta Técnica, Gerardo Bernal Castell Arquitecta Técnica

Noname 29 Arquitecto  
Alfredo Paya Benedito  
C/San Fernando 29 5°  
Alicante 03001  
Spain



**No. 60\_FLAGSHIP**

**Mr Jean BOCABELLE**  
**Mr Dominique VITTI**

Staff: M. MERIAC Benoit, Melle GILARDONE Linda, Melle ROLLET Marie-Sophie, Melle DOAT Solweig, Melle Rivolta Anna, M. PINSARD Luc, M. HASSAYOUNE Karim

PLAN01 Architectes  
Rue de Reuilly 89  
75012 Paris  
France

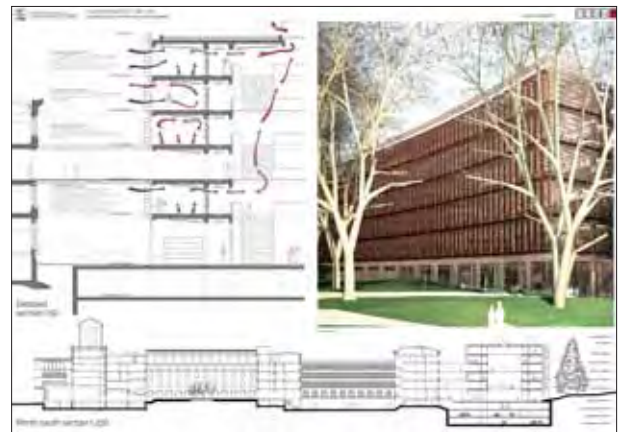


**No. 61\_6253272448328**

**Make Limited**

Staff: Bowden Simon Mr/Make Limited, Redman, James Mr/Make Limited, Costeris Laurens Mr/Make Limited, Bollinger Klaus Hr/Bollinger and Grohmann, Heath Piers Mr/PHA Consult, Winton Keith Mr/Winton Nightingale Associates

MAKE LIMITED  
Lomas lan  
55-65 Whitfield Street  
London W1T 4HE



## No. 62\_007007

### LEE + MUNDWILER ARCHITECTS

Staff: Co-workers, Stephan Mundwiler AIA, Project Architect, Cara Lee, Project Designer, Gustavo Santos, Designer, Nadya Aguilar, designer, Collaborators, Cao Perrot studio, lands-cape design and art, Xavier Perrot and Andy Cao, Paris and Los Angeles

Lee + Mundwiler Architects, inc.  
Stephan Mundwiler, architect AIA  
3233-C Donald Douglas Loup South  
Santa Mónica CA 90405  
USA



## No. 63\_9780500514252

### Mossessian michel

Staff: Brunksted Per - design director, Veiros John - technical design director, Celerier François - architect, Tomecki Roman - designer, ARUP, Structural, M&E Environmental Engineers, Zikri Mohsen - director, Davies Arfon - associate director

Mossessian & Partners Ltd  
31-37 Hoxton Street  
London N1 6NL,  
United Kingdom



## No. 64\_PANIERPIANO

### B. Montant C. Stendardo

Staff: Stéphanie Noverraz

Atelier 3BM3 SA  
8 Rue des Maraîchers  
1205 Genève  
Switzerland



## No. 65\_ACFGR300

### Arch. Fabio Cibinel Arch. Roberto Laurenti Arch. Giorgio Martocchia Arch. Alessandro Mazzoli

Staff: Arch. Angela Bello, Arch. Cristina Carmona Botana, Ing. Francesca Campagna

CIBINEL, LAURENTI, MARTOCCHIA ARCHITETTI ASSOCIATI  
+ 3TI Progetti Italia ingegneria integrata srl  
Via Amerigo Vespucci, 24  
00197 - Roma  
Italy



**No. 66\_650972**

**IaN+**

Staff: Ing. Stefania Manna IaN+, Ing. Pierpaolo dell'Omo environmental consultant, Arch. Fabrizio Glorioso project architect, Arch. Chiara Scocco landscape architect, Arch. Manuela Gentile design, Arch. Gianluca Fontana details design Ing. Pierpaolo Presta design team, Arch. Barbara Roppo design team

IaN+ Architects  
Via Marco Polo 121  
00154 Roma  
Italy



**No. 67\_314517238917**

**Arch. Francesco Isidori  
Arch. Maria Claudia Clemente**

Staff: Ing. Gilberto Sarti, Structural engineer, Ing. Mauro Bernardini, Structural engineer, Arch. Eliana Cangelli, Environmental strategy, Arch. Pablo Miguel Saravia, Environmental strategy, Arch. Maurizio Sibilla, Environmental strategy, Arch. Susan Berardo, Arch. Chiara Capriulo, Arch. Gaia Maria Lombardo, Arch. Paola Bettinsoli, Ing. Miche Morganti

LABICS  
Via dei Magazzini Generali 16  
00154 Roma  
Italy



**No. 68\_400-820515-26**

**Marks Barfield Architects**

Staff: Chilton Steve, Beylkin Yevgeniy, Musa Mustasha, Gao Yan, Ressel Guilherme, Chan Ken, Aguilar Andres Metcalf Joanne, Hervey Tim

Marks Barfield Architects  
50 Bromells Road  
London SW4 0BG,  
UK

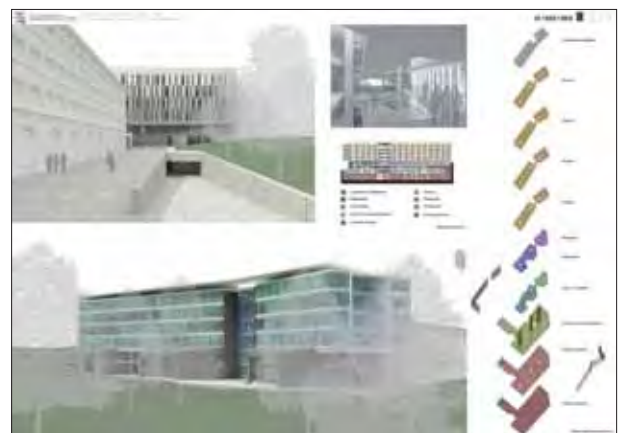


**No. 69\_M18861969**

**Prof. Arch. Roberta Albeiro  
Arch. Lorenzo Degli Esposti  
Arch. Enrico Gandolfi  
Arch. Paolo Laza  
Arch. Stefano Antonelli  
Arch. Umberto Bonomini**

Staff: Arch. Pierluigi di Giacomo, Arch. David Canale

ALGA studio & DEGLI ESPOTI ARCHITETTI  
via Macchi n°6  
20124 Milano  
Italy



## No. 71\_CUBES6

**TDA**  
**1PLAN**  
**ION+**

Staff: Samantha Guenette architecte DPLG (société ION+), Paolo Sciortino dottore in architettura (société ION+), Aldo Turchetti dottore in architettura, Jonathan Myara architecte DPLG (société 1PLAN), Noé Simonet architecte HMO (société 1PLAN)

1PLAN  
Olivia D'Aragon  
100 Boulevard de Belleville  
75020 Paris  
France



## No. 72\_MIROIRFENETRE

**Jesus Henández Mayor architect**  
**Helena Casanova Garcia architect**

Staff: Thomas Been architect, Robert Taapken architect, Rutger Johannes Huibert trainee

Casanova + Hernandez Architects  
Pannekoekstraat 104  
3011 LL Rotterdam  
The Netherlands



## No. 73\_EQUITABLE

**Pierre-Alain Dupraz**

Staff: Girard Gaëtan, Graf Kira, Butty Jérémy, Dellacherie Pauline, Morgado Mario, Consultant minergie P., Archiwatt\_Peter Haefeli

PIERRE-ALAIN DUPRAZ ARCHITECTE ETS FAS  
Avenue Rosemont 6  
1208 Genève  
Switzerland



## No. 74\_GV130606

**jfa\_Jaques Ferrier Architectures**

Staff: MIGEON Delphine, MONTEIRO Ana, WEISSENBACHER Charlotte

jfa\_Jaques Ferrier Architectures  
77 rue Pascal  
75013 Paris  
France





## No. 75\_VENTANA

### Willy Muller

Staff: Muller Willy, Bravo Maite, Zacek Tomas, Riso Virginia

WMA Willy Muller Architects SLP  
Ronda Sant Pere, 58 pral.2B  
08010 Barcelona  
Spain



## No. 76\_PARKWING

### Hosoya Schaefer Architects AG

Staff: Schaefer, Markus/ Waldburger, Pascal/ Murata, Naohiko/ Wang, Shih-Yuan/ Architect, Hosoya, Schaefer Architects AG, Puskas, Tivadar/ Structural Engineer, WGG, Schnetzer Puskas, Waldhauser, Marco/ MEP Engineer, Waldhauser Haustechnik AG, Pascal, Posset/ Saal, Leonard / Landscape, Architect, Hager Landschaftsarchitektur AG

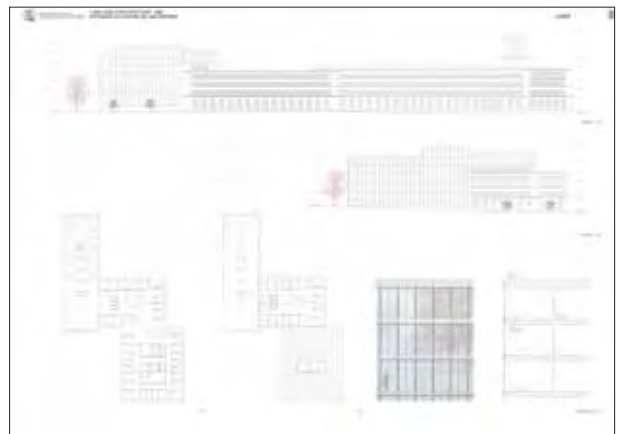
HOSOYA SCHAEFER  
ARCHITECTS AG  
Reinhardstrasse 19  
8008 Zürich



## No. 77\_LIGHT

### Statu Marjanen Eva Stricker

Satu Marjanen  
c/o Thomas K. Keller Architekten Gmbh  
Zweierstrasse 100  
CH-8003 Zürich  
Switzerland



## No. 78\_MIS EN PLACE

### Lussi+Halter Partner AG

Staff: Savi Daniele architect, Steiner Raphael architect, Othenin Girard Alain architect, Koch Janine architecte Thürig Marco stagiaire, Felber Elias apprentice

Lussi + Halter Partner AG  
Neustadtstrasse 3  
6003 Luzern  
Switzerland

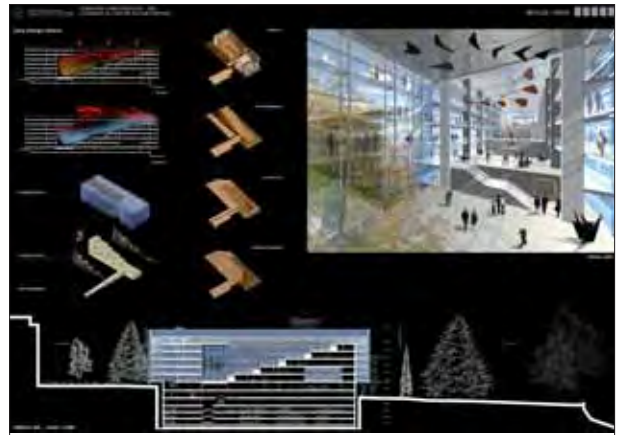


**No. 79\_B01D12L11R034**

**Federico Basso**  
**Aldo Daniele**  
**Guido Lotti**  
**Alessandro Rizzo**

Staff: Luca Daniele, Lorena Golotta, Giorgio Castagnino,  
Giovanna Cuoghi, Stefano Pene

Studio4 Architetti associati  
Via Assarotti 38/22,  
16122 Genova  
Italy



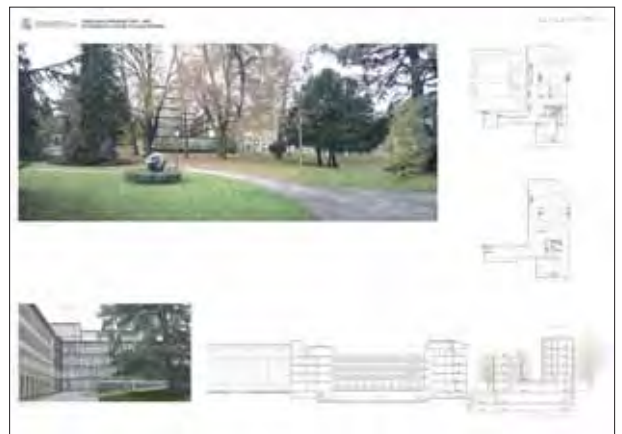
**No. 82\_E 770 05**

**Elie Barrau**  
Staff: Adèle Fremolle Architecte  
ELIE BARRAU  
Architecte D.E.S.A  
24, rue Muller  
75018 Paris  
France



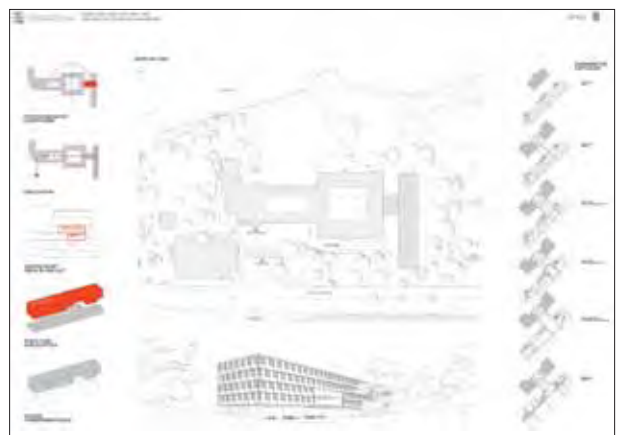
**No. 83\_BALANCE**

**Von Ballmoos Krucker**  
Staff: Katharina Penner, Jacques Rordorf, Fabiano Andina  
  
VON BALLMOOS KRUCKER  
ARCHITEKTEN ETH SIA BSA  
Badenerstrasse 156  
8004 Zürich  
Switzerland



**No. 84\_181625**

**Manuel Schupp**  
Staff: John Milligan  
  
Wilford Schupp Architekten GMBH  
Neue Bruecke 8  
70173 Stuttgart  
Germany



## No. 85\_JLXVPSEVMDSJ

### Patriarche & CO

Staff: Xavier Patriarche - architecte, Xavier Louis - dessin, Sophie Jay - dessin, Emile Lapraz - architecte, Jérôme Ponson - dessin, Sébastien Clert - HQE, Valentin Trillat - ingénieur énergies, Mathilde Patriarche - Graphisme, Valentine De Beaulieu - images 3d, Pierre Guilleret - dessinateur

Patriarche & CO Architectes + Ingenieurs Taxiway  
4 Allée de la garde  
Boite postale 285  
73375 Le Bourget du Lac CEDEX  
Savoie Technolac -  
France



## No. 86\_ECORCE

### GM Architectes Associés SA

Staff: Bastianello Marzia - architecte-ingénieur, Braud Emmanuelle - architecte DPLG, Deive Santiago - architecte, Douadi Céline - architecte DPLG, Dubi Jonathan - architecte HES, Mustafic Fata - architecte HES, Reymond Rachel - architecte HES, Silva Marta - architecte, Vahabi Kianoosh - architecte, Charpente Concept - façade Lucido, Rigot+Rieben - sécurité, Putallaz - thermique

GM Architectes Associés SA  
Antoine Muller, Christophe Ganz, Tizino Borghini, Maryam Gharebaghi  
Place de Jargonnant 5  
CH 1207 Genève  
Switzerland



## No. 87\_FOURSEASONS

### DeRahm Architectes & MGV.LAB scp

Staff: Lasser Royo Christian - architect, Herrero pfrür Fernando - architect, Ruiz de Loizaga Ràfolos Hugo - architect, de Rham Xirinachs Ursula - architect, de Rham Sébastien - architect

DeRahm Architectes & MGV.LAB scp  
Avenue de Rumine 7  
1005 Lausanne  
Switzerland



## No. 88\_IN BETWEEN

### Larnaudie Jean & Luc

Jacques Ferrier Architectures  
01 place de la Bourse  
3100 Toulouse  
France



**No. 89\_3ROCKS5518**

**BIERMANN Jeremy  
CHOURAQUI Marc**

BIERMANN & CHOURAQUI Architectes  
20 rue Sainte Croix de la Bretonnerie  
74004 Paris  
France



**No. 90\_13B30F24L06AN**

**Atelier 234**

Staff: Laure Meriaud - architecte

Atelier 234  
234 rue de Faubourg Saint-Antoine  
75012 Paris  
France



**No. 91\_AWISBEVFI**

**Alain Wielemans**

Mr Alain Wielemans Architecte  
46 Rue du Gouvernement  
7000 Mons  
Belgium



**No. 92\_ABCDEFGHIJKLM**

**LAN Architecture**

Staff: Batiserf ingenierie - structure, Bureau Michel Forgue -  
Economiste, LBE - fluide, Franck Boutte Consultants -HQE

LAN Architecture  
11 cité de l'ameublement  
75011 Paris  
France



## No. 93\_220582060182

### Salvatore Seggio

Staff: Paporello Adrien -Ingénieur structure, Boitard Julien -  
Conception HQE, ing.  
Fluide/thermique

Salvatore Seggio  
Via Della republica 13  
Verano Brianza  
Italy



## No. 94\_SENCILLEZ

### Rodolphe Luscher

Staff: Mario Da Campo - architecte, Christina Simon Sangüés -  
architecte, Raquel Martinez Rubio - architecte, Constance Beer  
- architecte, Marta Kurant - architecte, Martin Gauthier - architec-  
te-paysagiste, Jessica Braendli - architecte stagiaire, Marco De  
Francesco -architecte illustrateur

Luscher Architectes SA  
Boulevard de Grancy 37  
CH 1006 Lausanne  
Switzerland



## No. 96\_271220

### Tuomo Siitonen Architects

Staff: Lang Lennart - student of architecture, Enne Olli - student  
of architecture, Ostman Kristina - architect, Hakala Linda - CAD-  
drawer, Wiksten Linda - student of architecture Stolt Klaus -  
Model, Nevanperä Hans - 3d visualisation

Tuomo Siitonen Architects  
Veneentekijäntie 12  
00210 Helsinki -  
Finland



## No. 97\_THREE YARDS

### Architekt BSA SIA

Staff: Antje Wanner - architektnin, Eva Weiler - architektnin,  
Severin Frehner - HBZ

Andreas Senn  
Feldstrasse 31a  
CH-9000 St-Gallen  
Switzerland



## No. 98\_TLJSOP

**Olivier Palatre**  
**Tiphaine Leclere**  
**Jonny Sturari**

Staff: Olivier Palatre, Tiphaine Leclere, Jonny Sturari, BET Mecobat : Rocco Ferreri

Palatre, Leclere, Sturari  
86, rue de Charonne  
75011 Paris  
France



## No. 99\_639748

**Alexander Kraus architect**  
**Ahnsorge Jan architect**

Staff: Bosau Jens , bluefrogstudios visualisation, Ttüper Gondes-  
sen Partner, Landschaftsarchitekten BDLA, landscape design

Alexander Kraus Architekten (AKA)  
Mallinckrotdsasse 320  
44147 Dortmund



## No. 101\_PINGPONG

**LAB3 (LRS - ADA° - BLSA )**

Staff: Castellaneta Giuseppe - architecte DITL-ING, Deville  
Nicolas - architecte EPFL FAS, Rosselet Virgile - apprenti  
dessinateur, Roulet Bastien - architecte DPLG, Seiler Rolf -  
architecte EPFL SIA,

Seiler Rolf-LRS, Deville Nicolas-ADA°, Schaer Gabriel-BLSA  
C/O P.A.  
Clos de la Fonderie 11  
1227 Carouge  
Switzerland



## No. 103\_063YR25E638

**Gunther Bayer**  
**Peter Stobel**

Staff: Christian Vennemann - dipl. ing., Carlos Arnous dipl. ing.,  
Sven Kahl dipl. ing., Michael Thomas, Florian Budke

Bayer & Stobel Architekten BDA  
Richard-Wagner-str. 55  
D-67655 Kaiserslautern



## No. 104\_VERT DE LAC

**Narbonne François**  
**Thizy Céline**  
**Euverte Magali**  
**Brand Morgane**  
**Luzzi Noël**

Staff: Narbonne François - architecte DPLG, Thizy Céline - architecte DPLG, Euverte Magali - architecte DPLG, Brand Morgane - architecte HMONP, Luzzi Noël - architecte DPLG

François Narbonne architecte DPLG  
5, quai Comte Lair  
49400 Saumur



## No. 105\_DIAMANT IF D 273ct

**Daniel Herren - AIA, FSA, SIA**  
**Marcel Jeker et Remo Malerba**

Staff: Gini J. Bächtold & Moor SA - ing. civils EPF SIA USIC, Andréas Keller -ing. civils EPF SIA USIC, GAE- Gartenmann Engineering SA, Jacques Ballenegger -ing. phys. Bât. HES, Daniel Gloor - ing. Accoust. HES, Jansen SA, P. Baumann+HR Bont -conseillers techn. pour façades, Glas Trösch Holding SA, Urs Trittibach - architecte HES - constr. techn. vitr., Modellprodukte Bill Sarl, Martin Bill -Maquettiste, artiste sculpteur, Markus Brunner - Maquettiste, Heidi Reich - artiste de vitraux, 3S Swiss Solar Sytems SA, Christophe Gerber - conseil. techn. install. solaires

Herren+Damschen-Architectes+Urbanistes SA  
Thunstrasse 95  
CH-3006 Berne  
Switzerland

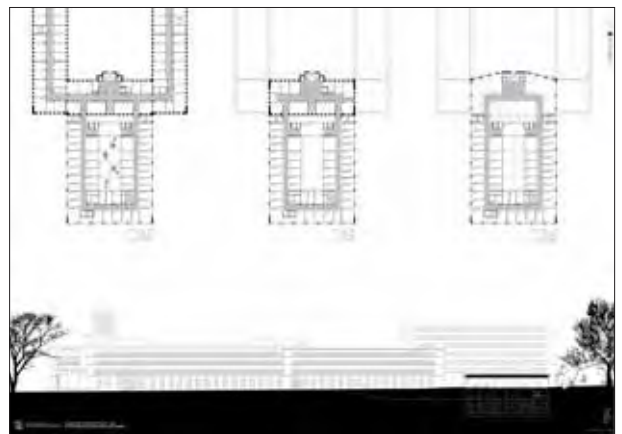


## No. 107\_CORPUS169

**Meier & associés architectes**

Staff: Meier Philippe - architecte EPFL, FAS, Renault Adrien - architecte stagiaire EPFL, Tadi Rita - architecte stagiaire ENSAL, Flum Patrick - architecte stagiaire HES, SB technique - ingénieur CVS conseil

Meier & associés architectes sa  
38bis, rue du Môle  
1201 Genève  
Switzerland



## No. 108\_LEPHAREDULAC

**Agrupación de arquitectos**  
**Architecture & Retail Rites SA**  
**Eduardo Samper Martínez &**  
**Rafael Esguerra Cleves**  
**Archipole Sarl**

Staff: Juan Carlos Zuniga - architecte, Fabian Sánchez - architecte, Ricardo Andres Bautista Penuela - architecte, Richard Oswaldo Hernández Ramírez - architecte, Leonardo Valcarcel Santafe - architecte, Alejandro Daza - architecte, maquette  
Architecture & Retail Rites SA (coordinator)

Jacques Python administrator y arquitecto SIA, EPFZ  
Place St-François 2  
Case Postale 7264  
1002 Lausanne

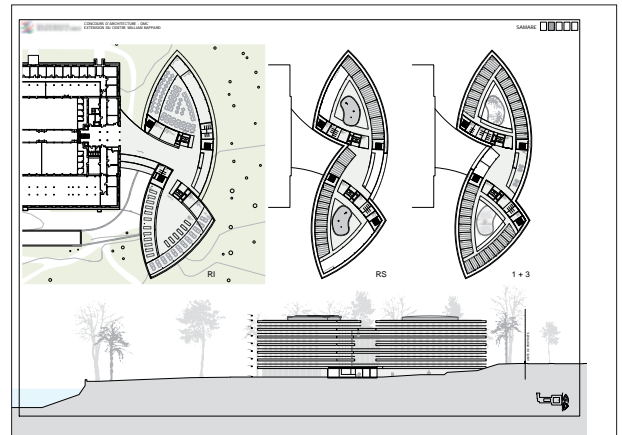


## No. 109\_SAMARE

**ASSOCIATION D'ARCHITECTES  
U.BRAUEN - D. WAELCHI architectes  
TEKHNE Management SA**

Staff: Buffin de Chosal Géraldine -architecte USI, Dos Santos Marco - architecte ESAP, Longo Patrizio - architecte HES, Potterat Manuel - architecte stagiaire

ASSOCIATION D'ARCHITECTES  
U.BRAUEN - D. WAELCHI ET TEKHNE SA  
p.a. TEKHNE SA  
place de l'Europe 8  
1003 Lausanne  
Switzerland



## No. 110\_UNITE

**ARGE blue architects & Ruprecht Architekten  
Thomas Hildebrand**

Staff: Samuel Seiler - architecte, Fabian Evers -architecte, Aerni & Aerni - ingénieur civil, Amstein & Walther - HLKSE & développement durable, Oxalis - paysagiste

Ruprecht Architekten  
Thomas Hildebrand, Blue architects, Rafael Ruprecht, Ruprecht Architekten  
Wasserwerkstrasse 129  
8037 Zürich  
Switzerland



## No. 113\_...WING

**Patrick Devanthy  
Inès Lamunière**

Staff: Alan Castoldi, Alexandra Wendt, Carine Jaccoud

DL-A  
Designlab-architecture SA  
P. Devanthy et I. Lamunière  
Architectes EPFL/FAS/SIA  
Rue du tunnel 7  
1227 Carouge  
Switzerland



## No. 115\_AL711

**François Texier**

Staff: Darnaud Axelle architecte-Paysagiste

François Texier architecte  
2, bd Jules Favre  
69006 Lyon  
France





## No. 116\_CONTINUITE

**Andrea Bassi**  
**Roberto Carella**

Staff: Carolina Fernandes stagiaire, Hadrien Smeets stagiaire

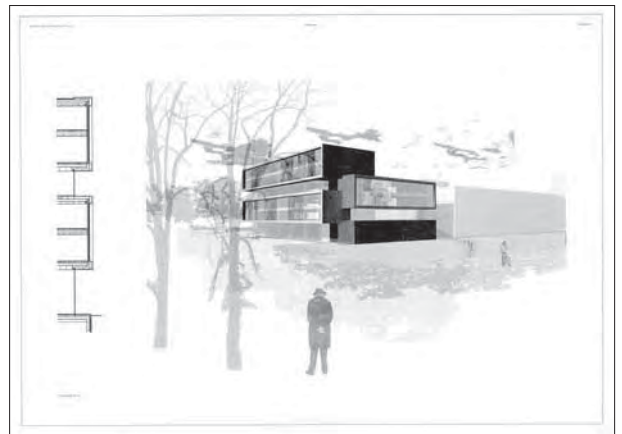
BASSI-CARELLA  
Avenue Rosemont 6  
1208 Genève  
Switzerland



## No. 117\_PUISSANCE 4

**Charles Pictet**

Charles Pictet Architecte FAS SIA  
12A, ch Franck-Thomas  
1208 Genève  
Switzerland



## No. 118\_INTERFACE

**Philippe Meyer**

Staff: Liliane Rössler architecte, Frank Krischan architecte,  
Laurent Carrera

Meyer Arcitecte 19,  
rte de Veyrier  
1227 Carouge  
Switzerland



## No. 119\_CONTINUITE (B)

**Sara Adakan**  
**Daniel Gonvers**

MAG Architects  
aynyli Çesme cad. N°29  
Tepebasi beyoglu  
34440 Istanbul  
TURKEY



**No. 120\_DKRPL**

**Tuke Manton Architects  
Bureau Happold And Ten**

TUKE MANTON Architects  
& HAPPOLD AND TEN  
20 Prescott Place  
London SW4 6BT  
UK



**No. 121\_97530**

**Hartmann Gunnar  
Bandi Christian**

New Dialogues AG  
Edenstrasse 16  
8045 Zürich  
Switzerland



**No. 122\_COUR OUVERTE**

**PAOLO AMALDI  
FEDERICO NEDER**

PAOLO AMALDI  
FEDERICO NEDER  
Architectes  
19, rue de Veyrier  
CH-1227 CAROUGE/GENEVE





**President**

Mr J. GARCÉS



**Members**

Mr R. YERXA



Mr V. DO PRADO



Mr H. STIRØ



Mr A. PÉREZ



Mr M. MULLER



Mr F. REINHARD



Mrs T. GARCIA-GILL



Mrs I. CHAROLLAIS



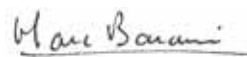
Mrs O. DECQ



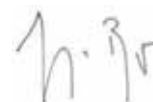
Mrs A. STAUFER



Mr M. BARANI



Mr J. BUGNA

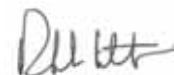


Mr M. GRABER



**Alternates**

Mr R. LUTHER



Mr E. AMHOF



Mr R. MAGNIN



Mr A. MATHEZ



Mr F. DE MARIGNAC



Mr J.-P. STEFANI







WTO OMC