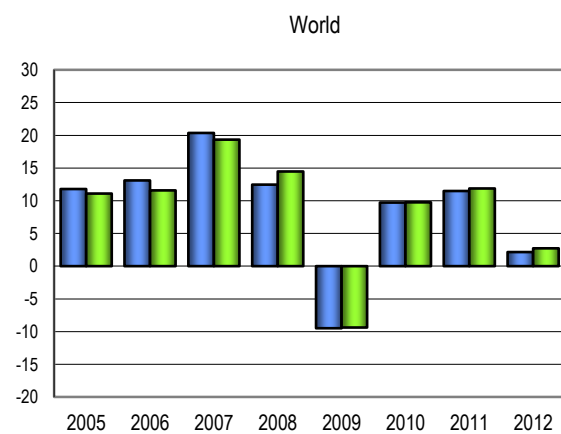
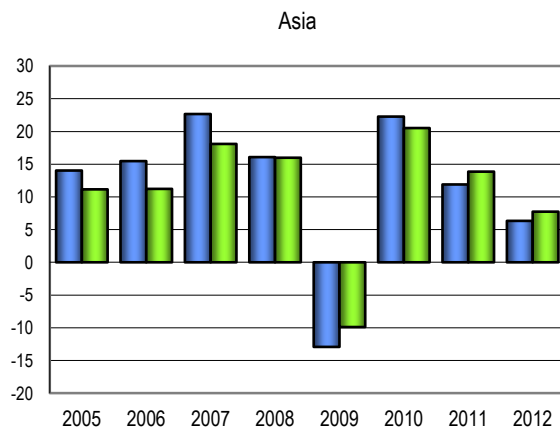
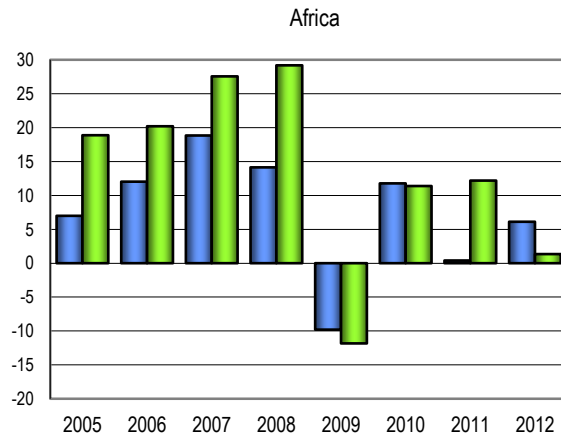
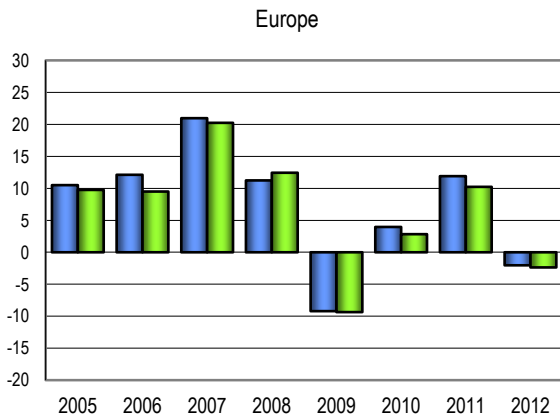
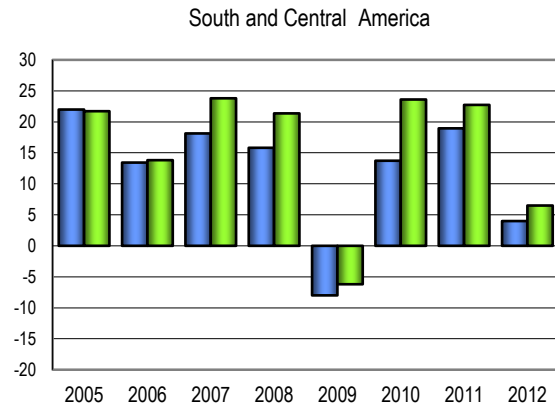
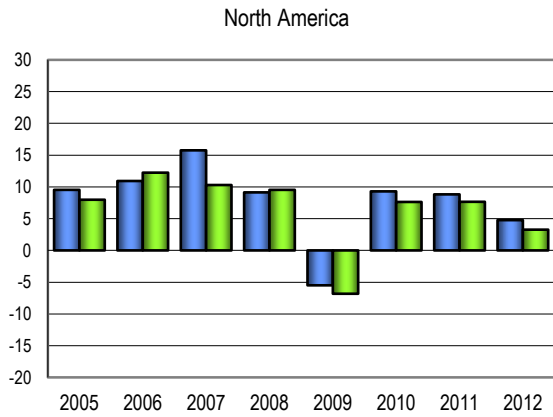


Chart 5

Value of world trade in commercial services by region, 2005-12

(Annual percentage change in value)

Exports Imports



Valeur du commerce mondial des services commerciaux de certaines régions, 2005-12

(Variation annuelle de la valeur en pourcentage)

Exportations Importations

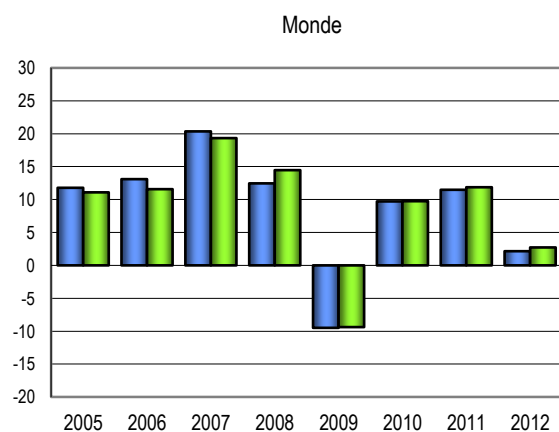
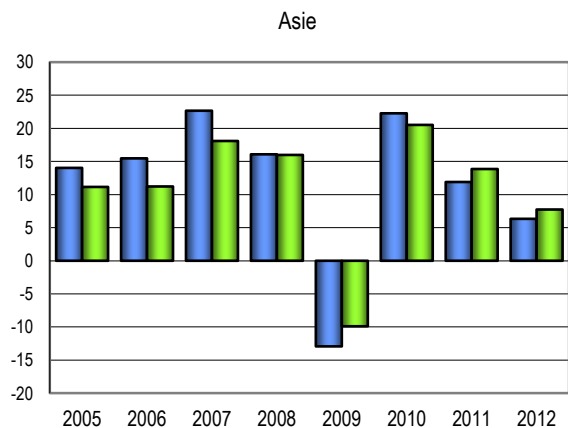
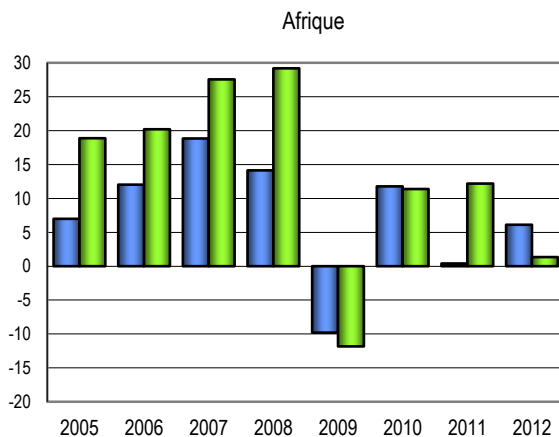
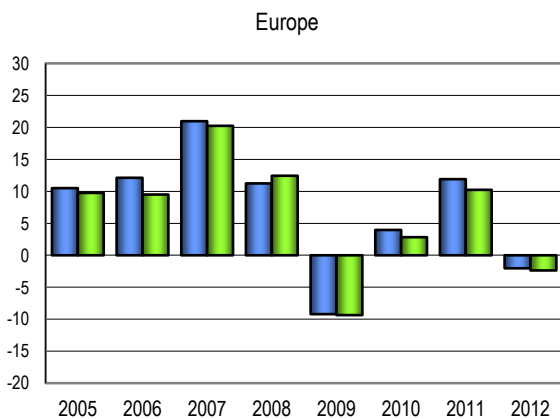
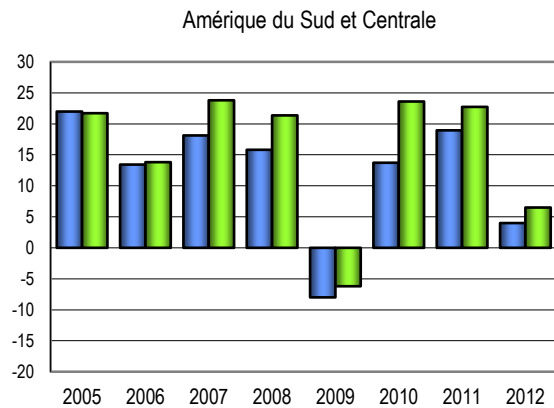
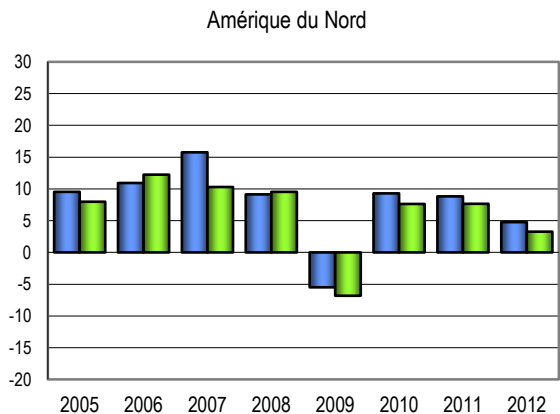


Gráfico 5

Valor del comercio mundial de servicios comerciales de ciertas regiones, 2005-12

(Variación porcentual anual en valor)

Exportaciones Importaciones

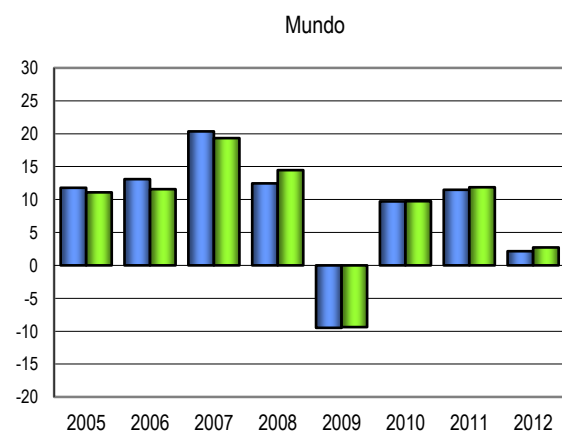
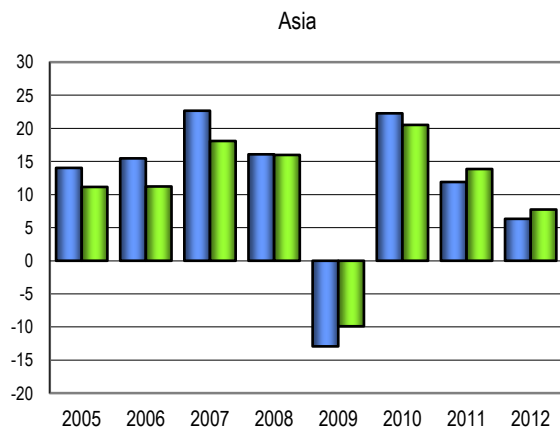
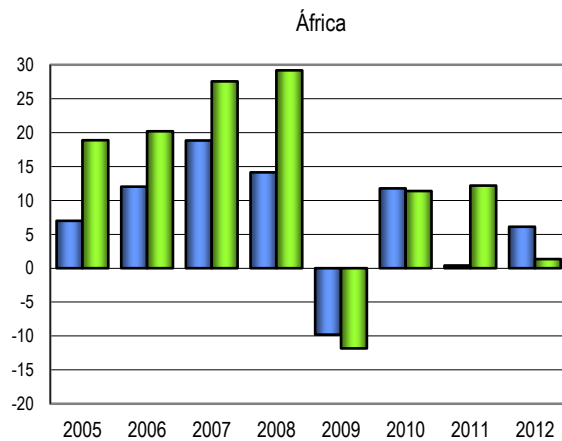
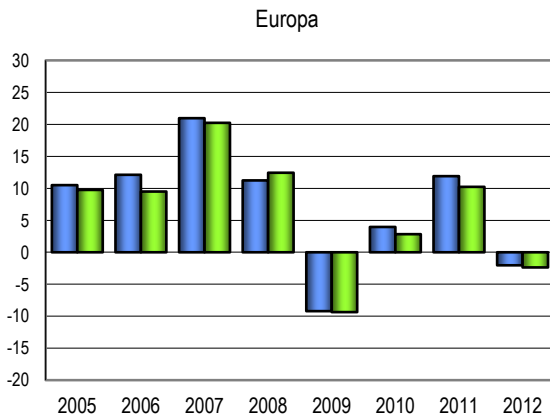
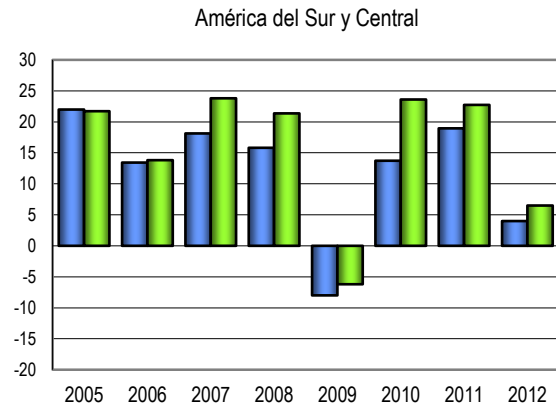
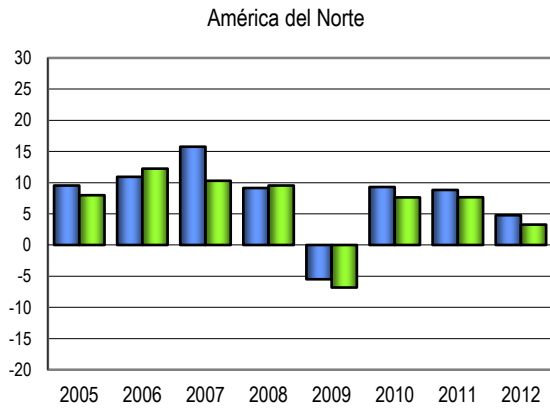


Chart 5

Value of world trade in commercial services by region, 2005-12

EXPORTS (\$ Million)

	2004	2005	2006	2007	2008	2009	2010	2011	2012
North America	396082	433860	481288	557140	608054	574640	628065	683498	716091
C./S. America/Caribbean	57324	69929	79322	93705	108526	99848	113556	135080	140474
Europe	1178508	1302261	1460062	1766248	1964748	1783851	1854480	2075226	2032966
Commonwealth of Independent States	35035	41450	51418	67532	85590	71627	79829	95999	104590
Africa	52241	55892	62615	74410	84928	76605	85624	85964	91219
Middle East	50465	64128	77657	89129	98280	94420	103947	114863	129317
Asia	478115	545174	629486	772134	896264	780373	954153	1067655	1135261
Total	2247770	2512693	2841848	3420298	3846390	3481364	3819654	4258285	4349918
World	2247770	2512693	2841848	3420298	3846390	3481364	3819654	4258285	4349918
Check	0	0	0	0	0	0	0	0	0

IMPORTS (\$ Million)

	2004	2005	2006	2007	2008	2009	2010	2011	2012
North America	332229	358750	402674	444143	486507	453314	487914	525270	542441
C./S. America/Caribbean	58389	71072	80894	100150	121550	114012	140928	172973	184217
Europe	1041933	1143549	1252182	1505672	1692949	1534537	1577960	1739409	1698191
Commonwealth of Independent States	50780	59048	69015	91134	114670	92932	109128	128863	151980
Africa	60306	71690	86171	109917	142000	125199	139450	156446	158548
Middle East	79086	98326	122250	159444	189936	174520	196422	224499	237471
Asia	522929	581232	646445	763385	885385	797795	961485	1094715	1179429
Total	2145653	2383668	2659631	3173844	3632997	3292309	3613288	4042174	4152279
World	2145653	2383668	2659631	3173844	3632997	3292309	3613288	4042174	4152279
Check	0	0	0	0	0	0	0	0	0

ANNUAL % CHANGE

		2005	2006	2007	2008	2009	2010	2011	2012
North America	Exports	9.5	10.9	15.8	9.1	-5.5	9.3	8.8	4.8
	Imports	8.0	12.2	10.3	9.5	-6.8	7.6	7.7	3.3
C./S. America/Caribbean	Exports	22.0	13.4	18.1	15.8	-8.0	13.7	19.0	4.0
	Imports	21.7	13.8	23.8	21.4	-6.2	23.6	22.7	6.5
Europe	Exports	10.5	12.1	21.0	11.2	-9.2	4.0	11.9	-2.0
	Imports	9.8	9.5	20.2	12.4	-9.4	2.8	10.2	-2.4
Commonwealth of Independent States	Exports	18.3	24.0	31.3	26.7	-16.3	11.5	20.3	8.9
	Imports	16.3	16.9	32.0	25.8	-19.0	17.4	18.1	17.9
Africa	Exports	7.0	12.0	18.8	14.1	-9.8	11.8	0.4	6.1
	Imports	18.9	20.2	27.6	29.2	-11.8	11.4	12.2	1.3
Middle East	Exports	27.1	21.1	14.8	10.3	-3.9	10.1	10.5	12.6
	Imports	24.3	24.3	30.4	19.1	-8.1	12.5	14.3	5.8
Asia	Exports	14.0	15.5	22.7	16.1	-12.9	22.3	11.9	6.3
	Imports	11.1	11.2	18.1	16.0	-9.9	20.5	13.9	7.7
Total	Exports	11.8	13.1	20.4	12.5	-9.5	9.7	11.5	2.2
	Imports	11.1	11.6	19.3	14.5	-9.4	9.7	11.9	2.7