



Tracking the carbon footprint

Facilitating Trade for Climate and the Environment

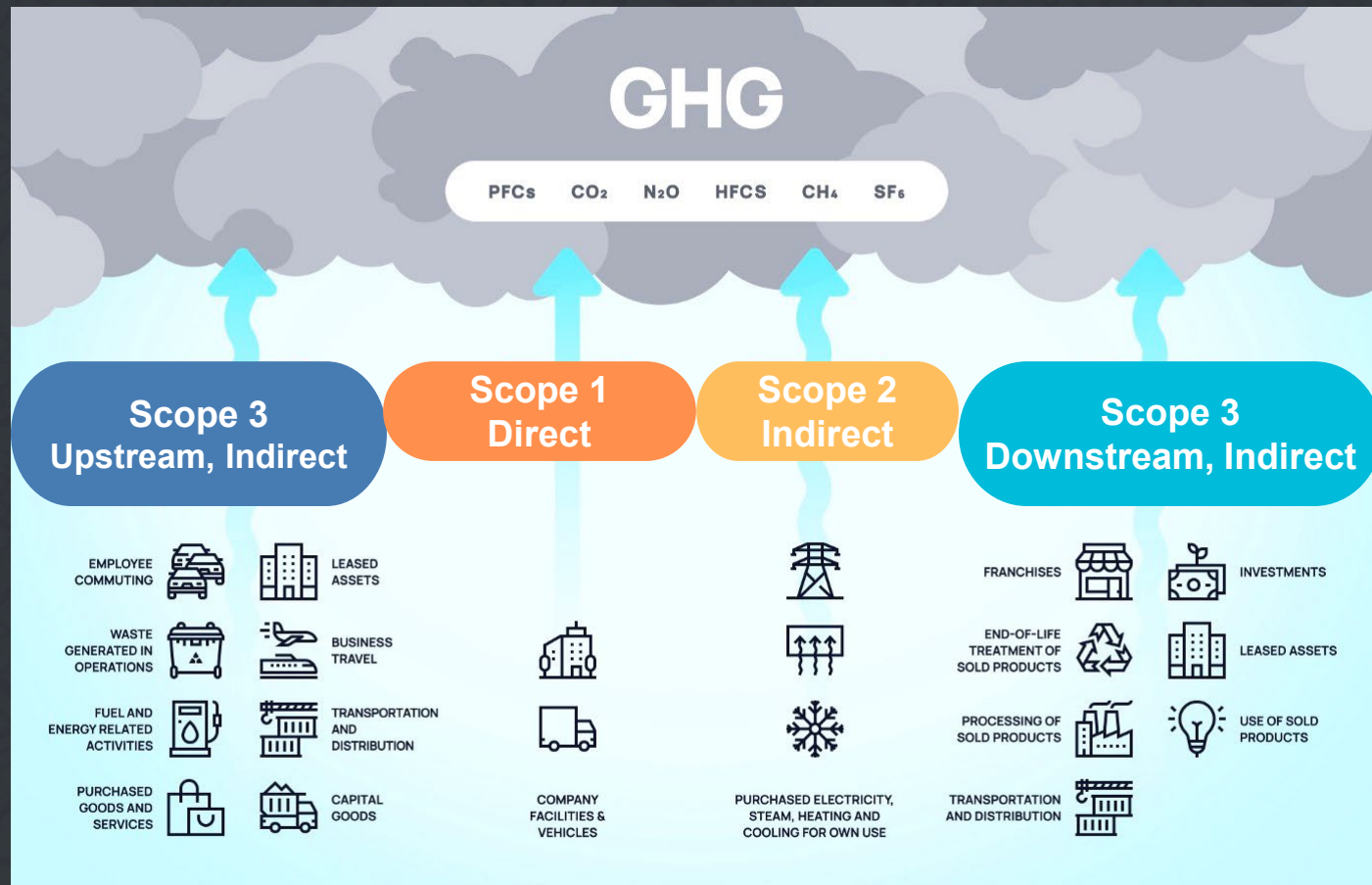
July 5, 2022





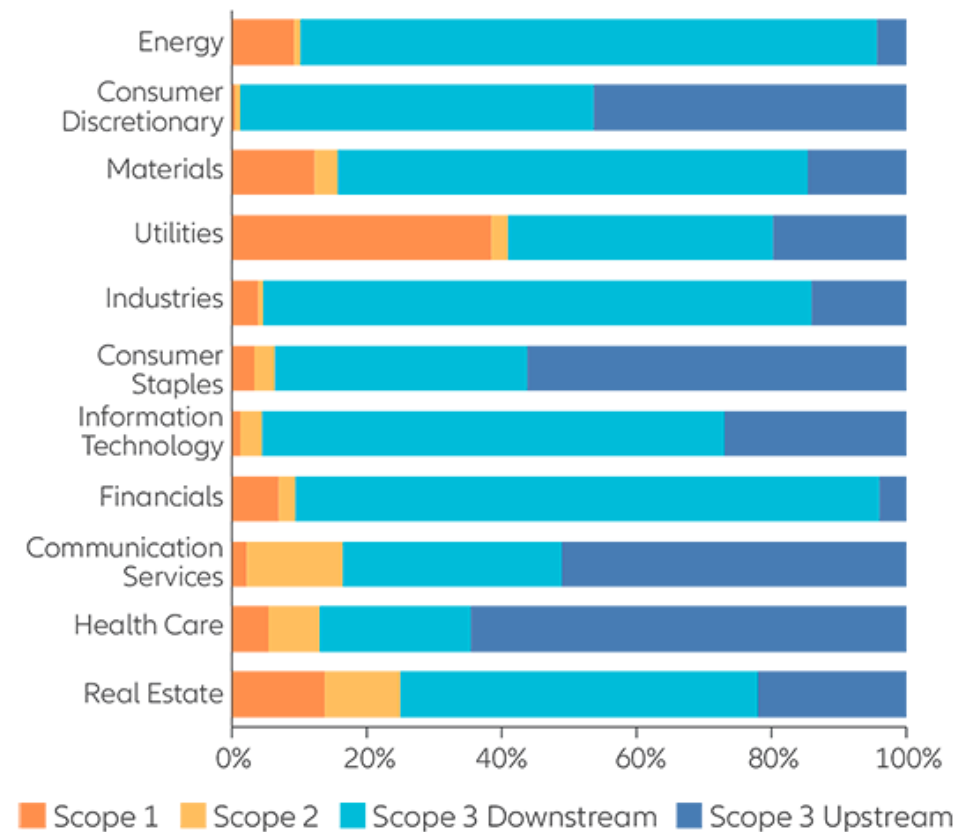
Understanding Current GHG Emissions Across Modes

Supply Chain Sustainability is a Critical Topic



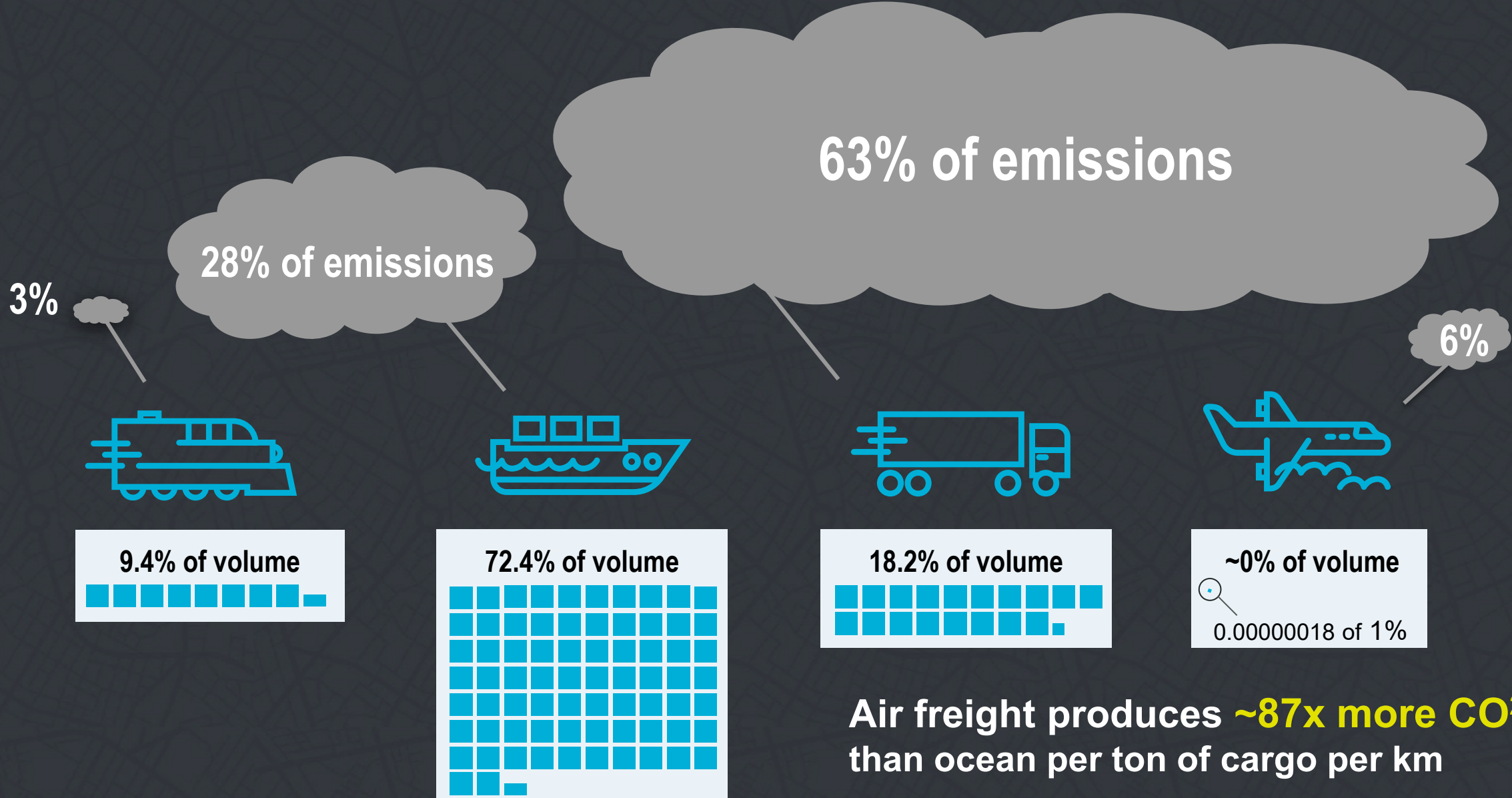
Source: Vlinder Climate

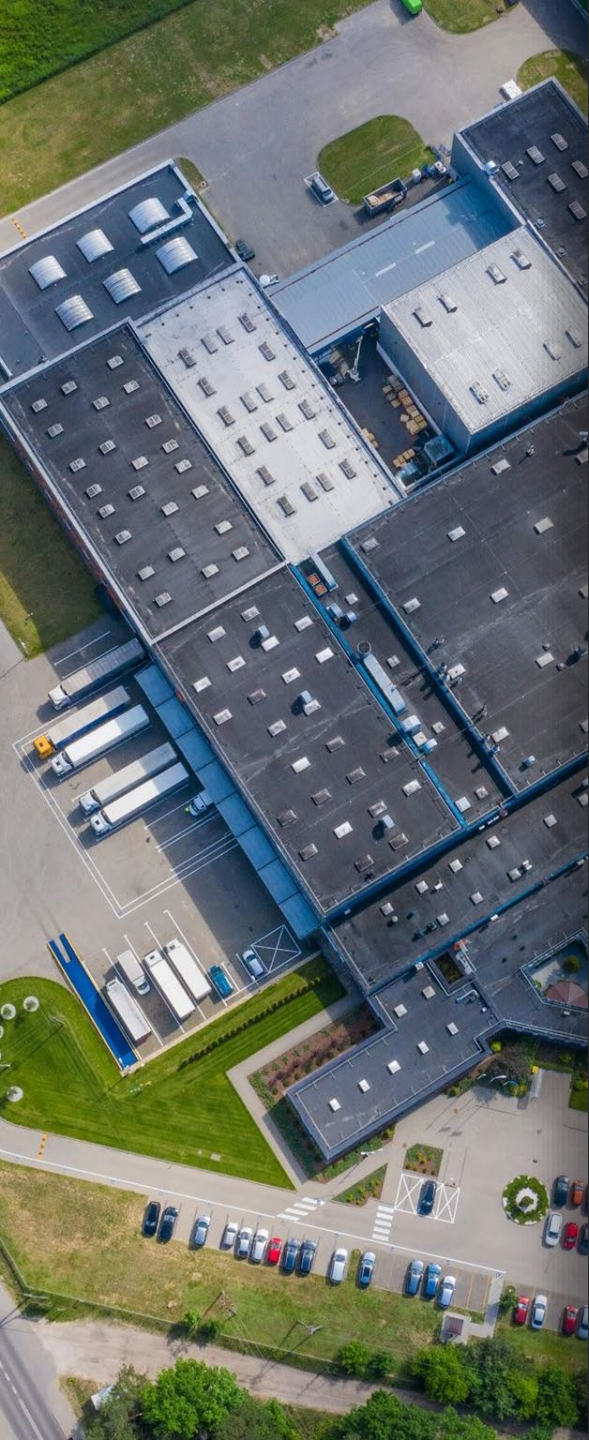
Exhibit 1: Share of scope 1,2,3, by sector



Source: GICS sector (based on MSCI World – MSCI 08/06/2021)

Comparison: Share of Global Freight Volume vs. Share of Emissions





Strategies for Reducing Emissions

Common Areas of Waste in Supply Chain Logistics

Expedites
requiring high
emissions
transportation
modes

Excess dwell:
trucks idling too
long at
load/unload,
borders, etc.

Overproduction:
wasted inventory,
warehouse
space and
product moves

Empty
backhauls and
wasted trailer
space due to
poor load
planning

Inventory
spoilage or
damage in
transit



Opportunities for | developing countries and SME's

Digitization for Regional Development & Business Growth

Digitization in Supply Chain and Logistics

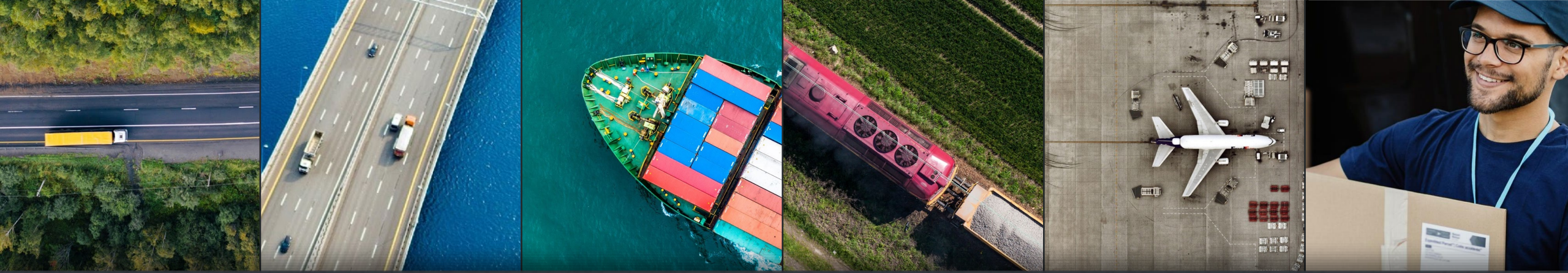
(Electronic documents
and communications,
freight tracking)

Enables Faster, More
Proactive Operations

Supports Product Security
and Quality Requirements

Streamlines Collaboration

**Attracts New
Partnerships
and Outside
Businesses**



Thank You!