

# GENERAL AGREEMENT ON TARIFFS AND TRADE

---

RESTRICTED

MTN/NTM/INF/2

15 April 1975

Special Distribution

## INFORMATION FOR DELEGATIONS

### Sub-Groups of the Group "Non-Tariff Measures"

"Quantitative Restrictions"  
"Technical barriers to trade"

#### 1. Building in which meetings are held

The above sub-groups will be held at the Palais des Expositions, Quai Ernest Ansermet, Geneva. The first meeting of the Sub-Group "Quantitative Restrictions" will be held at 10 a.m. on 22 April 1975 in Room B. (first floor).

#### 2. Access to the Palais des Expositions

The entrance to the sector of the Palais des Expositions reserved for the Sub-Groups is on the Quai Ernest Ansermet (on the Arve, see plans attached).

#### 3. Car park

A car park for delegations is situated in the Palais des Expositions with entrance from the Quai Ernest Ansermet (see plan attached).

#### 4. Public transport and taxis

Bus No. 4 (Palais Wilson - Place Bel Air - Grand Lancy) passes the Palais des Expositions; the closest stop to the entrance of the sector reserved for the conference is on the corner Bvd. du Pont d'Arve and Bvd. Carl Vogt (Temple de Plainpalais). This bus connects with other means of public transport at various points in town.

Taxis can be obtained by application to the huissier in the entrance lobby.

./.

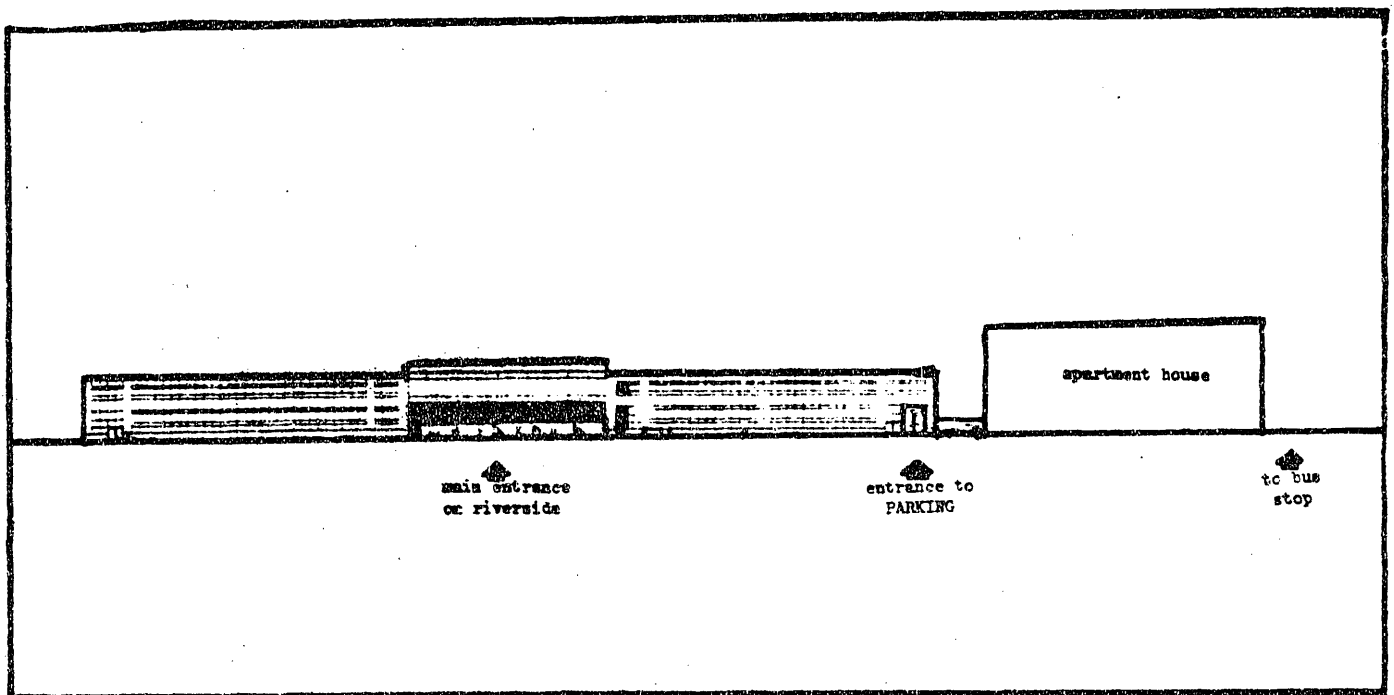
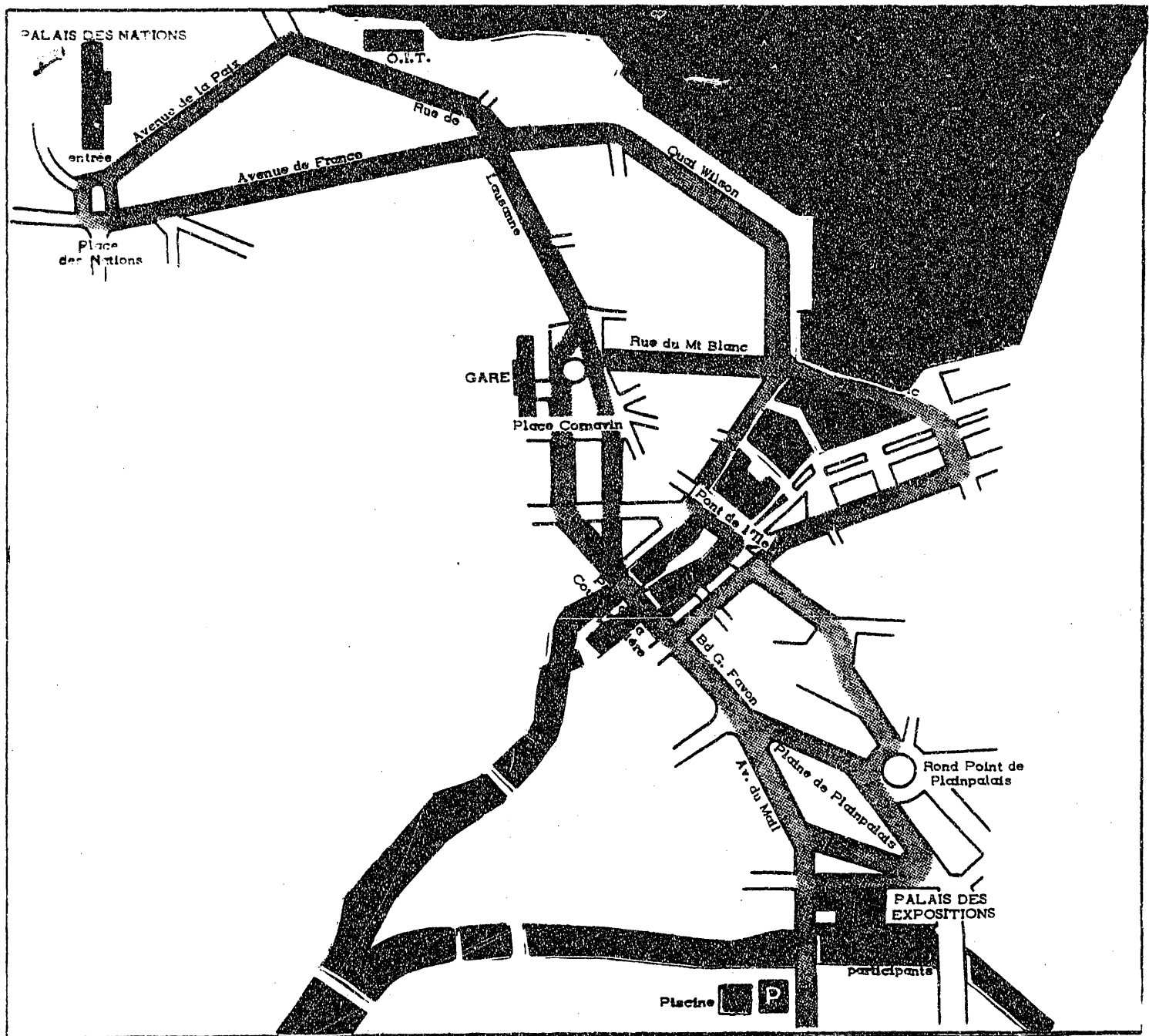
5. Telephone

The telephone numbers of the Palais des Expositions reserved for the conferences are:

43.48.43

43.48.44

Telephone booths are available to participants in the entrance for local calls.

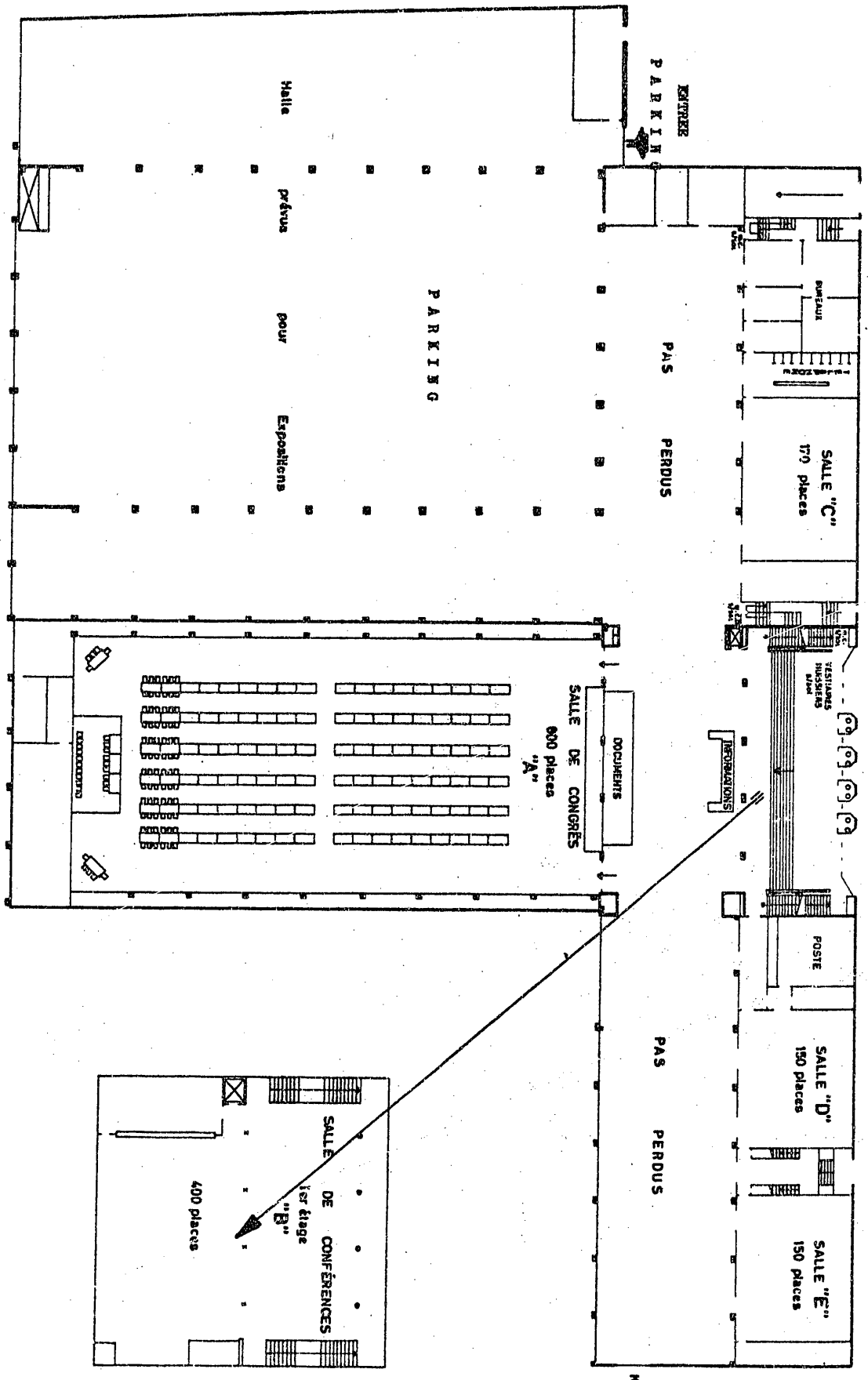


ex Quai Ecole de Médecine  
Quai Ernest Ansermet

ENTRÉE

ex Quai Ecole de Médecine  
Quai Ernest Ansermet

Pont



0 5 10 15 20  
mètres

COMPLEXE  
SALLES DES CONGRÈS  
PALAIS DES EXPOSITIONS  
GENÈVE

BVD CARL VOGT